



e-Watch®

## **SiteWatch™**

# **Export Viewer User Guide**

SiteWatch Version 3.1

## **e-Watch Corporation**

7800 IH 10 West, Suite 720  
San Antonio, TX 78230  
USA

[www.e-watch.com](http://www.e-watch.com)

tel: 210 349-2000  
fax: 210 341-1020

## READ THIS NOTICE

THE SPECIFICATIONS AND INFORMATION REGARDING THE PRODUCTS IN THIS MANUAL ARE SUBJECT TO CHANGE WITHOUT NOTICE. ALL STATEMENTS, INFORMATION, AND RECOMMENDATIONS IN THIS MANUAL ARE BELIEVED TO BE ACCURATE BUT ARE PRESENTED WITHOUT WARRANTY OF ANY KIND, EXPRESS OR IMPLIED. USERS MUST TAKE FULL RESPONSIBILITY FOR THEIR APPLICATION OF ANY PRODUCTS.

THE SOFTWARE LICENSE AND LIMITED WARRANTY FOR THE ACCOMPANYING PRODUCT ARE SET FORTH IN THE INFORMATION PACKET THAT SHIPPED WITH THE PRODUCT AND ARE INCORPORATED HEREIN BY THIS REFERENCE. IF YOU ARE UNABLE TO LOCATE THE SOFTWARE LICENSE OR LIMITED WARRANTY, CONTACT YOUR E-WATCH REPRESENTATIVE FOR A COPY. NOTWITHSTANDING ANY OTHER WARRANTY HEREIN, ALL DOCUMENT FILES AND SOFTWARE OF THESE SUPPLIERS ARE PROVIDED 'AS IS' WITH ALL FAULTS. E-WATCH AND ITS SUPPLIERS DISCLAIM ALL WARRANTIES, EXPRESSED OR IMPLIED, INCLUDING, WITHOUT LIMITATION, THOSE OF MERCHANTABILITY, FITNESS FOR A PARTICULAR PURPOSE AND NONINFRINGEMENT OR ARISING FROM A COURSE OF DEALING, USAGE, OR TRADE PRACTICE.

IN NO EVENT SHALL E-WATCH OR ITS SUPPLIERS BE LIABLE FOR ANY INDIRECT, SPECIAL, CONSEQUENTIAL, OR INCIDENTAL DAMAGES, INCLUDING, WITHOUT LIMITATION, LOST PROFITS OR LOSS OR DAMAGE TO DATA ARISING OUT OF THE USE OR INABILITY TO USE THIS MANUAL, EVEN IF E-WATCH OR ITS SUPPLIERS HAVE BEEN ADVISED OF THE POSSIBILITY OF SUCH DAMAGES.

### UNITED STATES FEDERAL COMMUNICATIONS COMMISSION NOTICE

The following information is for FCC compliance of Class A devices: This equipment has been tested and found to comply with the limits for Class A digital device, pursuant to part 15 of the FCC rules. These limits are designed to provide reasonable protection against harmful interference when the equipment is operated in a commercial environment. This equipment generates, uses, and can radiate radio-frequency energy and, if not installed and used in accordance with the instruction manual, may cause harmful interference to radio communications. Operation of this equipment in a residential area is likely to cause harmful interference, in which case users will be required to correct the interference at their own expense.

You can determine whether your equipment is causing interference by turning it off. If the interference stops, it was probably caused by the e-Watch equipment or one of its peripheral devices. If the equipment causes interference to radio or television reception, try to correct the interference by using one or more of the following measures:

- Turn the television or radio antenna until the interference stops.
- Move the equipment to one side or the other of the television or radio.
- Move the equipment farther away from the television or radio.
- Plug the equipment into an outlet that is on a different circuit from the television or radio. (That is, make certain the equipment and the television or radio are on circuits controlled by different circuit breakers or fuses.)

Modifications to this product not authorized by e-Watch could void the FCC approval and negate your authority to operate the product.

### COPYRIGHT AND TRADEMARK NOTICE

Copyright© 2003-2006 e-Watch Corporation. All rights reserved. e-Watch is a registered trademark of e-Watch Corporation. ViewWatch, DecisionWatch, EventWatch, SiteWatch, MotionWatch, GateWatch, AirWatch, PocketWatch, PeopleWatch, BankWatch, ClassWatch, ObjectWatch, WatchLink, Activity Gated Storage, Digital Police and Gigapixel are trademarks of e-Watch Corporation. Any other trademarks mentioned in this document are the property of their respective owners.

The use of the word partner does not imply a partnership relationship between e-Watch and any other company.

e-Watch® systems do not prevent crimes from being committed, but are intended to be used to monitor and investigate.

e-Watch components are electronic devices and complex commercial software products. As such, they may fail on occasion. Multiple devices with overlapping zones should be used for redundancy.

e-Watch event notification capabilities must be user programmed and activated prior to use. System reliability is dependent on the underlying network infrastructure and associated communications services that may fail on occasion. The user of the e-Watch system is advised to evaluate risk associated with network failures and operator errors. Routine auditing and preventive maintenance of the system is essential to assure optimum performance.

Event analysis and recreation is subject to system configuration, lighting conditions, environmental conditions, lens and housing cleanliness, distance to subject, operator-invoked control settings, and many other factors.

Read and follow all documentation to assure proper performance.

**C O N T E N T S****Preface**

- Purpose ii
- Audience ii
- Organization iii
- Related Documentation iii
- Conventions iii
- Obtaining Documentation iv
- Documentation Feedback v
- Obtaining Assistance v

**PART 1****CHAPTER 1****User Guide****INTRODUCTION 1**

- About Exported Images 1
- Software Prerequisites 2
- Copying The Exported Files 2
- Installing The Video Filter 2
- Creating A Shortcut To The e-Watch Image Viewer Program 3

**CHAPTER 2****VIEWING IMAGES 4**

- The Video Panes 4
- The Camera List 4
- The Playback Controls 5
- Typical Playback Example 6

**CHAPTER 3****VERIFYING IMAGES 8**

- Checking For The Microsoft Java Virtual Machine 8
- Starting The e-Watch Image Verification Program 8
- Creating A Shortcut To The e-Watch Image Verification Program 9
- Using The e-Watch Image Verification Program 9

**PART 2****Appendices****APPENDIX A****List of Figures 11****APPENDIX B****List of Tables 12****INDEX****Index 13**

## **PREFACE**

The preface describes the purpose, audience, organization, and conventions of this guide. It also provides information on how to obtain related documents.

The preface covers these topics:

- Purpose
- Audience
- Organization
- Related Documentation
- Conventions
- Obtaining Documentation
- Documentation Feedback
- Obtaining Assistance

## **Purpose**

This e-Watch® User Guide provides instructions for operating the SiteWatch™ Export Viewer. It includes descriptions of procedural tasks to complete when operating the system. It identifies Graphical User Interface (GUI) buttons, menus, and dialog windows and their configuration. Operation of the Export Viewer consists entirely of executing the commands and options displayed as part of the user interface.

## **Audience**

This e-Watch User Guide provides operating instructions for users of the SiteWatch Export Viewer. Some knowledge of Microsoft® Windows and web browsing is preferred.

## Organization

This guide is organized as shown in Table 0-1

*Table 0-1. Organization*

<b>Part</b>	<b>Description</b>
Part 1	‘User Guide’  Contains information on using the Export Viewer from a user’s perspective.
Part 2	‘Appendices’  List Of Figures, List Of Tables and Index.

## Related Documentation

Refer to the following documents for further information about related e-Watch applications and products:

- URG-9119-001—e-Watch Design Guide
- URG-9110-001—SiteWatch Situational Awareness System Administration Guide
- URG-9106-001—SiteWatch Situational Awareness System User Guide
- URG-9111-001—e-Watch Situational Awareness System Quick Start Guide
- URG-9105-001—GateWatch™ Third-Party Integration Software Administration Guide
- URG-9112-001—e-Watch Product Overview

## Conventions

This document uses the conventions shown in Table 0-2.

*Table 0-2. Conventions*

<b>Convention</b>	<b>Description</b>
<b>Boldface</b> font	Commands and keywords are in <b>boldface</b> .
<i>Italic</i> font	Arguments for which you supply values are in <i>italics</i> .
[ ]	Elements in square brackets are optional.

Table 0-2. Conventions

{x y z}	Alternate keywords are grouped in brackets and separated by vertical bars.
[x y z]	Optional keywords are grouped in brackets and separated by vertical bars.
String	A non-quoted set of characters. Do not use quotation marks around the string or the string will include the quotation marks.
Screen font	Terminal sessions and information the system displays are in screen font.
<b>Boldface</b> screen font	Information you must enter is in <b>boldface</b> screen font.
<i>Italic</i> screen font	Arguments for which you supply values are in <i>italic</i> screen font.
^	The symbol ^ represents the key labeled Control - for example, the key combination of ^D in a screen display means hold down the Control key while you press the D key.
-->	This pointer highlights an important line of text in an example.
◊	Non-printing characters, such as passwords, are in angle brackets.

## Obtaining Documentation

The following sections provide sources for obtaining documentation from e-Watch Corporation.

### World Wide Web

e-Watch documents can be found by going to the e-Watch web site [www.e-watch.com](http://www.e-watch.com).

### By Mail

e-Watch Corporation  
 7800 IH 10 West, Suite 720  
 San Antonio, Texas 78230  
 210 349-2000  
[support@e-watch.com](mailto:support@e-watch.com)

## Documentation Feedback

You can submit technical comments about e-Watch documentation in the following ways:

E-mail your comments to [support@e-watch.com](mailto:support@e-watch.com)

To submit comments by mail, write to the following address:

e-Watch Corporation  
7800 IH 10 West, Suite 720  
San Antonio, Texas 78230

We appreciate your comments.

## Obtaining Assistance

The following sections provide sources for obtaining assistance from e-Watch Corporation.

### Customer Support

For technical assistance please send requests to [support@e-watch.com](mailto:support@e-watch.com) or your local e-Watch reseller. If you have a software maintenance agreement, call 210-349-2000 and ask for Customer Support.

### Sales

For assistance with sales or marketing please call 210-349-2000 and ask for Sales or send requests to [sales@e-watch.com](mailto:sales@e-watch.com).

## Introduction

The SiteWatch™ Situational Awareness System is a comprehensive surveillance and monitoring system adapted for transmitting Motion Picture Experts Group (MPEG) video streams, high resolution Joint Photographic Experts Group (JPEG) images, Motion JPEG (MJPEG), and detected event data over both wired and wireless networks (Local Area Network [LAN] and Wide Area Networks [WAN]). Third-party systems, such as access control, alarms, and environmental monitoring can be integrated with the SiteWatch system.

SiteWatch is based on standard networking and Internet technology. Real-time data, as well as archived data, can be viewed from any authorized personal computer (PC) on the LAN, WAN, or the Internet.

SiteWatch archives and maintains all situational awareness information for event reconstruction and analysis. SiteWatch provides high-speed access to archived data for fast retrieval and display of data related to a specific event.

## About Exported Images

The SiteWatch system administrator can export images from the SiteWatch archive. The exported images can be copied to a compact disk, flash drive or other removable media. An e-Watch® export viewer program is provided to view and analyze the exported images.

The exported images are identical to the images in the SiteWatch archive, and are digitally signed using the Digital Signature Standard (DSS) described in Federal Information Processing Standards (FIPS) publication 186. An e-Watch image verification program is provided to validate the authenticity of the images and to verify that the images have not been altered.

## Software Prerequisites

The e-Watch image viewer and image verification programs are designed to be as self-contained as possible, and to minimize the software prerequisites. To use these programs, you must have the following software installed on your computer.

1. Microsoft® Windows 2000 or Windows XP operating system.
2. Microsoft Internet Explorer web browser.
3. Microsoft DirectX version 9 or later.
4. Microsoft Java Virtual Machine (image verification program only).

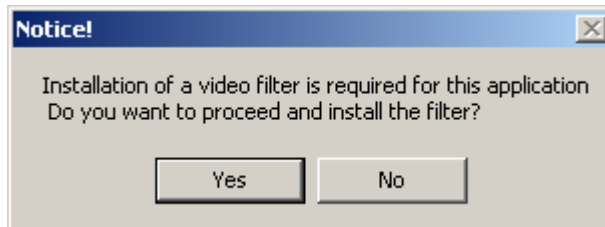
## Copying The Exported Files

You may operate the e-Watch image viewer and image verification programs directly from the media on which you received the software. However, depending on the speed of the media and your media device, performance may be less than optimal. You may copy the exported files from the delivery media onto your computer's hard drive to improve performance. If you choose to do so, copy all of the files and folders from the delivery media onto your computer's hard drive exactly as they are found on the delivery media. If you do not copy some files, or rename any file or folder, the e-Watch image viewer and image verification programs may not work correctly.

## Installing The Video Filter

In order to use the e-Watch image viewer program, you must install the e-Watch DirectX video filter. This is the only software that is installed on your computer.

1. If the delivery media is a compact disk, insert the disk into your disk drive. If the setup program automatically runs, skip to step 4.
2. Locate the root folder of the delivery media, or the root folder on your computer's hard drive where you copied the exported files.
3. Double-click **setup.exe**.
4. The first time you run the setup program, you will see the following prompt:



*Figure 1-1. Install Video Filter*

5. Click the **Yes** button to install the video filter.

After the filter is installed, the e-Watch image viewer program will be displayed. The next time you insert the compact disk or double-click `setup.exe`, the e-Watch image viewer program will be displayed immediately.

## **Creating A Shortcut To The e-Watch Image Viewer Program**

If you have copied the exported files to your computer's hard drive you can create a shortcut to the e-Watch image viewer program. The shortcut should point to **`ewatchexportviewer.exe`**. But remember that you must run **`setup.exe`** at least once to install the video filter.

## Viewing Images

The e-Watch® image viewer program is used to view and analyze the images exported from the SiteWatch™ Situational Awareness System. The archived images may be high-resolution JPEG images, MPEG video clips, or Motion JPEG streams. Images may have been exported from one or more cameras.

### The Video Panes

The video panes are located in the upper right section of the e-Watch image viewer. The video panes are used to display the exported JPEG, MPEG or Motion JPEG images. The video panes may be arranged as one, four, nine or sixteen individual panes using the video pane control buttons shown in Figure 2-1.



*Figure 2-1. Video Pane Control Buttons*

Images from a selected camera are displayed in each pane.

### The Camera List

The window on the left side of the e-Watch image viewer lists the cameras that have exported images as shown in Figure 2-2.



Figure 2-2. Camera List

To view the exported images from a camera, “drag” a camera from the camera list and “drop” it into one of the video panes.

## The Playback Controls

The playback controls are located at the bottom of the e-Watch image viewer as shown in Figure 2-3 and Figure 2-4.



Figure 2-3. Playback Controls, Left Side

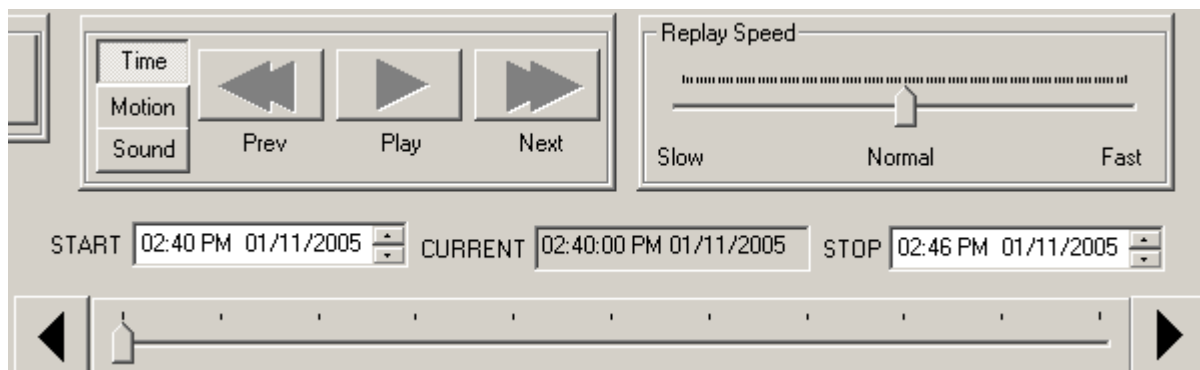


Figure 2-4. Playback Controls, Right Side

Table 3-1 describes the Playback Controls.

*Table 3-1. Description Of Playback Controls*

<b>Button or Control</b>	<b>Description</b>
JPEG	Selects JPEG mode where exported JPEG images will be replayed.
MPEG	Selects MPEG mode where exported MPEG or Motion JPEG video clips will be replayed.
Video Size	Displays images at original size (1x) or full pane size (FULL).
Time	Replays all images, even during periods of no motion or sound.
Motion	Replays images only during time periods when at least one displayed camera has detected motion.
Sound	Replays images only during time periods when at least one displayed camera has detected sound.
Play/Pause	Plays or pauses the image playback.
Prev (Previous)	Displays the immediately preceding JPEG. Only active during Play mode when JPEG is selected.
Next	Displays the immediately succeeding image. Only active during Play mode when JPEG is selected.
Replay Speed control	Regulates how rapidly images are displayed, ranging from Slow to Fast. The Normal position in the center of the slider bar corresponds to real-time speed.
START, CURRENT, STOP	Allows manual entry of desired playback start and stop times. The CURRENT field shows the actual date and time of the displayed images during playback.
Progress Bar	Located below the start and stop times, Progress Bar graphically represents the time period between the start and stop times, and the slider represents the time in the CURRENT field. The slider can be "dragged" with the mouse to any desired position on the bar. The images associated with the new position of the slider will be displayed in the video panes.
Adjustment Arrows	Located on each end of the Progress Bar, the adjustment arrows increment or decrement the CURRENT field by one second.

## Typical Playback Example

The following steps illustrate how to replay exported images.

1. Click the Video Pane Control Button to select a single video pane.
2. From the Camera List, select a camera and drag it into the video pane.
3. Enter the desired start and stop times.
4. Click the JPEG button to replay exported JPEG images for the selected time frame.
5. Click the MPEG button to replay MPEG video clips for the selected time frame. The highest resolution MPEG available will be displayed.
6. Select Time, Motion or Sound reply mode.
7. Click the **Play** button. Exported video for the selected camera will be displayed in the video pane. To pause the replay, click the **Pause** button.
8. Drag the slider on the Progress Bar to reposition the playback.

## Verifying Images

The e-Watch® image verification program is used to validate the authenticity of the exported images and to verify that the images have not been altered. Exported images are digitally signed using the Digital Signature Standard (DSS) described in Federal Information Processing Standards (FIPS) publication 186. The e-Watch image verification program verifies the digital signature.

Using the e-Watch image verification program requires the Microsoft® Java Virtual Machine. If you do not have the Microsoft Java Virtual Machine (see figure 3-1), contact e-Watch support using the information provided in the preface.

### Checking For The Microsoft Java Virtual Machine

Follow this procedure to determine whether the Microsoft Java Virtual Machine (JVM) is installed on your computer.

1. Click **Start**, then **Run**
2. In the **Open** text box, type **cmd**, then click **OK**
3. At the command prompt, type **jview**, then press **ENTER**
4. If the JVM is not installed on your computer, you will see the following message: 'jview' is not recognized as an internal or external command, operable program or batch file
5. If the JVM is installed on your computer, you will see the following message: Microsoft (R) Command-line Loader for Java Version  
x.xx.xxxx

### Starting The e-Watch Image Verification Program

Locate the root folder of the delivery media, or the root folder on your computer's hard drive where you copied the exported files. Double-click **verifyimage.exe**.

If the Microsoft Java Virtual Machine is not installed on your computer, you will see the message shown in Figure 3-1.

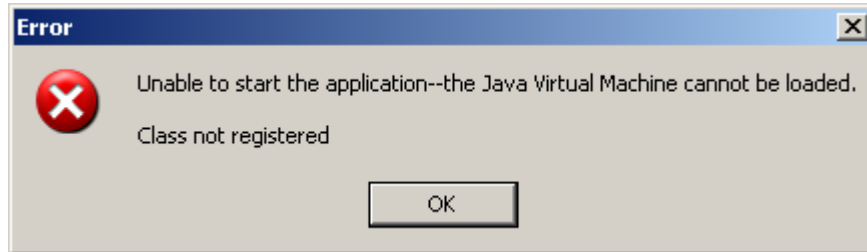


Figure 3-1. Microsoft JVM Not Installed

## Creating A Shortcut To The e-Watch Image Verification Program

If you have copied the exported files to your computer's hard drive you can create a shortcut to the e-Watch image verification program. The shortcut should point to **verifyimage.exe**

## Using The e-Watch Image Verification Program

The e-Watch Image Verification Program user interface is shown in Figure 3-2.

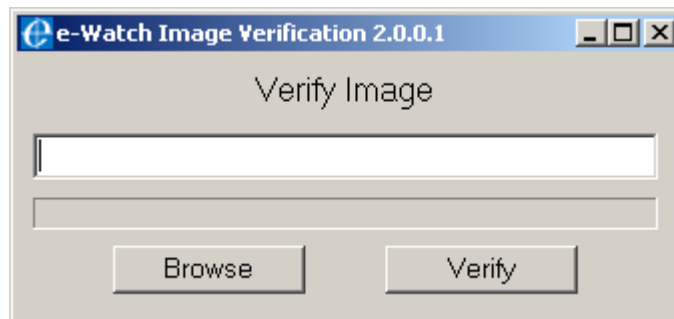
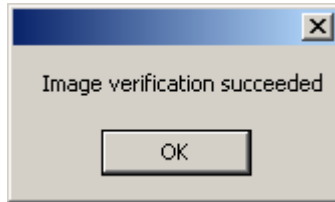


Figure 3-2. e-Watch Image Verification Program User Interface

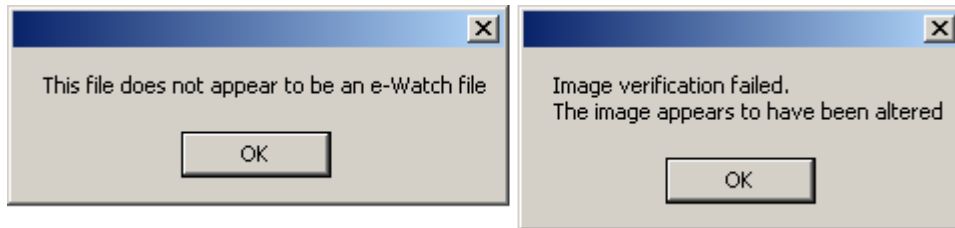
1. Type the full path name of the image file you wish to verify in the text box, or click the Browse button and select a file from the Open File dialog.
2. Click the Verify button.

If the image file is authentic and has not been altered, you will see the message shown in Figure 3-3.



*Figure 3-3. Image Verification Succeeded*

If the image file is not authentic or has been altered, you will see one of the messages shown in Figure 3-4.



*Figure 3-4. Image Verification Failed*

## List of Figures

- Figure 1-1. Install Video Filter 3
- Figure 2-1. Video Pane Control Buttons 4
- Figure 2-2. Camera List 5
- Figure 2-3. Playback Controls, Left Side 5
- Figure 2-4. Playback Controls, Right Side 5
- Figure 3-2. e-Watch Image Verification Program User Interface 9
- Figure 3-3. Image Verification Succeeded 10
- Figure 3-4. Image Verification Failed 10

## List of Tables

Table 0-1. Organization iii  
Table 0-2. Conventions iii  
Table 3-1. Description Of Playback Controls 6

---

## I N D E X

### C

Camera List 4

### D

Digital Signature Standard 1, 8

### E

Exported Images 1

### F

Federal Information Processing Standards 1, 8

### I

Image Verification Program 8

Image Viewer Program 4

### J

Java Virtual Machine 8

### P

Playback Controls 5, 6

Playback Example 6

### S

Shortcuts 3, 9

SiteWatch 1

Software Prerequisites 2

### V

Video Filter 2

Video Pane Control Buttons 4

Video Panes 4