



e-Watch®

SiteWatch™ Situational Awareness System User Guide

SiteWatch Version 4.0

e-Watch Corporation

7800 IH 10 West, Suite 720
San Antonio, TX 78230
USA

www.e-watch.com

tel: 210 349-2000
fax: 210 341-1020

READ THIS NOTICE

THE SPECIFICATIONS AND INFORMATION REGARDING THE PRODUCTS IN THIS MANUAL ARE SUBJECT TO CHANGE WITHOUT NOTICE. ALL STATEMENTS, INFORMATION, AND RECOMMENDATIONS IN THIS MANUAL ARE BELIEVED TO BE ACCURATE BUT ARE PRESENTED WITHOUT WARRANTY OF ANY KIND, EXPRESS OR IMPLIED. USERS MUST TAKE FULL RESPONSIBILITY FOR THEIR APPLICATION OF ANY PRODUCTS.

THE SOFTWARE LICENSE AND LIMITED WARRANTY FOR THE ACCOMPANYING PRODUCT ARE SET FORTH IN THE INFORMATION PACKET THAT SHIPPED WITH THE PRODUCT AND ARE INCORPORATED HEREIN BY THIS REFERENCE. IF YOU ARE UNABLE TO LOCATE THE SOFTWARE LICENSE OR LIMITED WARRANTY, CONTACT YOUR E-WATCH REPRESENTATIVE FOR A COPY. NOTWITHSTANDING ANY OTHER WARRANTY HEREIN, ALL DOCUMENT FILES AND SOFTWARE OF THESE SUPPLIERS ARE PROVIDED 'AS IS' WITH ALL FAULTS. E-WATCH AND ITS SUPPLIERS DISCLAIM ALL WARRANTIES, EXPRESSED OR IMPLIED, INCLUDING, WITHOUT LIMITATION, THOSE OF MERCHANTABILITY, FITNESS FOR A PARTICULAR PURPOSE AND NONINFRINGEMENT OR ARISING FROM A COURSE OF DEALING, USAGE, OR TRADE PRACTICE.

IN NO EVENT SHALL E-WATCH OR ITS SUPPLIERS BE LIABLE FOR ANY INDIRECT, SPECIAL, CONSEQUENTIAL, OR INCIDENTAL DAMAGES, INCLUDING, WITHOUT LIMITATION, LOST PROFITS OR LOSS OR DAMAGE TO DATA ARISING OUT OF THE USE OR INABILITY TO USE THIS MANUAL, EVEN IF E-WATCH OR ITS SUPPLIERS HAVE BEEN ADVISED OF THE POSSIBILITY OF SUCH DAMAGES.

UNITED STATES FEDERAL COMMUNICATIONS COMMISSION NOTICE

The following information is for FCC compliance of Class A devices: This equipment has been tested and found to comply with the limits for Class A digital device, pursuant to part 15 of the FCC rules. These limits are designed to provide reasonable protection against harmful interference when the equipment is operated in a commercial environment. This equipment generates, uses, and can radiate radio-frequency energy and, if not installed and used in accordance with the instruction manual, may cause harmful interference to radio communications. Operation of this equipment in a residential area is likely to cause harmful interference, in which case users will be required to correct the interference at their own expense.

You can determine whether your equipment is causing interference by turning it off. If the interference stops, it was probably caused by the e-Watch® equipment or one of its peripheral devices. If the equipment causes interference to radio or television reception, try to correct the interference by using one or more of the following measures:

- Turn the television or radio antenna until the interference stops.
- Move the equipment to one side or the other of the television or radio.
- Move the equipment farther away from the television or radio.
- Plug the equipment into an outlet that is on a different circuit from the television or radio. (That is, make certain the equipment and the television or radio are on circuits controlled by different circuit breakers or fuses.)

Modifications to this product not authorized by e-Watch could void the FCC approval and negate your authority to operate the product.

COPYRIGHT AND TRADEMARK NOTICE

Copyright© 2003-2006 e-Watch Corporation. All rights reserved. e-Watch is a registered trademark of e-Watch Corporation. ViewWatch, DecisionWatch, EventWatch, SiteWatch, MotionWatch, GateWatch, AirWatch, PocketWatch, PeopleWatch, BankWatch, ClassWatch, ObjectWatch, WatchLink, Activity Gated Storage, and Gigapixel are trademarks of e-Watch Corporation. Any other trademarks mentioned in this document are the property of their respective owners.

The use of the word partner does not imply a partnership relationship between e-Watch and any other company.

e-Watch systems do not prevent crimes from being committed, but are intended to be used to monitor and investigate.

e-Watch components are electronic devices and complex commercial software products. As such, they may fail on occasion. Multiple devices with overlapping zones should be used for redundancy.

e-Watch event notification capabilities must be user programmed and activated prior to use. System reliability is dependent on the underlying network infrastructure and associated communications services that may fail on occasion. The user of the e-Watch system is advised to evaluate risk associated with network failures and operator errors. Routine auditing and preventive maintenance of the system is essential to assure optimum performance.

Event analysis and recreation is subject to system configuration, lighting conditions, environmental conditions, lens and housing cleanliness, distance to subject, operator-invoked control settings, and many other factors.

Read and follow all documentation to assure proper performance.

C O N T E N T S**Preface**

- Purpose iv
- Audience iv
- Organization v
- Related Documentation v
- Conventions v
- Obtaining Documentation vi
- Documentation Feedback vi

PART 1

CHAPTER 1

USER GUIDE**INTRODUCTION 1**

- Typical Monitor Station 1
- Logging On 2
 - Access Roles 2
 - ◆ User Role 2
 - ◆ Investigator Role 3
 - ◆ Administrator Role 3
 - If Your Desktop Does Not Have An e-Watch Icon: 4
 - Logging On Remotely 4
 - ◆ Bandwidth Option 5
 - ◆ Available Bandwidth Option 5
 - ◆ Motion JPEG Only Option 5
 - Using Local Cache 5
 - Single Pane Logon 5
 - Internet Explorer Security 6
- Remote Server 7
- The Primary ViewWatch™ Screen 8
 - The Map Window 8
 - ◆ Map Icons For Third-Party Devices 9
 - ◆ Map Window Actions 10
 - The Video Window 10
 - ◆ Video Window Actions 12
 - ◆ Video Window Icons 13
 - The Control Window 14

- ViewWatch Options 15
 - ◆ Video Buffer Size 16
 - ◆ Pre-load Camera Controls 16
 - ◆ Popup Error Messages 17
- Setting The Buffer Size For A Specific Camera 17
- Full Screen Mode 18

CHAPTER 2

VIDEO 19

- To View Video 19
 - Basics 19
 - Details 20
- Viewing Video From Other Servers, Maps, and Sites 21
 - Sites 22
 - Maps 22
 - Servers 22
- Camera Controls 23
 - Pan/Tilt 24
 - ◆ Pan/Tilt Version One 24
 - ◆ Pan/Tilt Version Two 24
 - Pelco Spectra II/III Controls 25
 - ◆ Joystick Control of Pelco Spectra II/III Camera 28
 - ◆ Joystick Crosshairs 30
 - Advanced Pelco Spectra III Pan/Tilt/Zoom Controls 30
 - ◆ Field Of View Pan/Tilt 31
 - ◆ Click To Pan/Tilt 31
 - ◆ Mousewheel Zoom 31
 - ◆ Follow The Mouse 32
 - ◆ Pan/Tilt/Zoom To Box 32

CHAPTER 3

THE BROWSE FUNCTION 33

- Playback Controls 33
 - Typical Browse Example 36
 - Tips 36
 - Audio Control 37
- Region of Interest Filter 37

CHAPTER 4

ALARMS AND ALERTS 39

- Overview 39
 - Alarms 39
 - ◆ Motion 39
 - ◆ Audio 39
 - ◆ Panic Button 39
 - ◆ Event 39
 - ◆ Temperature 40
 - Alerts 40
- ViewWatch Popup Alerts 40
 - Acknowledging And Clearing Alarms 40
 - Panic Button Alarms 40
 - Pager Calls 43
 - e-Mail Messages 43
- Arming The System 43
- Zoom To Alarm 43

CHAPTER 5

CONFIGURING VIEWWATCH™ 45

- Presets 45
 - Scheduling Presets 46
 - Scheduling Multiple Presets 47
- List Cameras 48
- List Zones 49
 - Viewing a Zone 49

PART 2

APPENDICES

APPENDIX A

LIST OF FIGURES 50

APPENDIX B

LIST OF TABLES 52

APPENDIX C

ACRONYMS AND ABBREVIATIONS 53

APPENDIX D

GLOSSARY 54

INDEX

INDEX 58

The preface describes the purpose, audience, organization, and conventions of this guide. It also provides information on how to obtain related documents.

The preface covers these topics:

- Purpose
- Audience
- Organization
- Related Documentation
- Conventions
- Obtaining Documentation
- Documentation Feedback
- Obtaining Assistance

Purpose

This User's Guide provides instructions for operating the SiteWatch™ Situational Awareness Software. It includes descriptions of procedural tasks to complete when operating the system. It identifies Graphical User Interface (GUI) buttons, menus, and dialog windows and their configuration. Operation of the system consists entirely of executing the commands and options displayed as part of the user interface.

Audience

The SiteWatch User Guide provides operating instructions for users of the e-Watch® Situational Awareness System. Some knowledge of Microsoft Windows® and web browsing is preferred.

Organization

This guide is organized as shown in Table 0-1

Table 0-1. Organization

Part	Description
Part 1	‘User Guide’ Contains information on using the SiteWatch software from a User’s perspective.
Part 2	‘Appendices’ Glossary, Index and Abbreviations.

Related Documentation

Refer to the following documents for further information about related e-Watch applications and products:

- URG-9119-001—e-Watch® Design Guide
- URG-9110-001—SiteWatch™ Situational Awareness System Administration Guide
- URG-9111-001—e-Watch® Situational Awareness System Quick Start Guide
- URG-9105-001—GateWatch™ Third-Party Integration Software Administration Guide
- URG-9112-001—e-Watch Product Overview

Conventions

This document uses the conventions shown in Table 0-2.

Table 0-2. Conventions

Convention	Description
Boldface font	Commands and keywords are in boldface .
<i>Italic</i> font	Arguments for which you supply values are in <i>italics</i> .
[]	Elements in square brackets are optional.
{x y z}	Alternate keywords are grouped in brackets and separated by vertical bars.

Table 0-2. Conventions

[x y z]	Optional keywords are grouped in brackets and separated by vertical bars.
String	A non-quoted set of characters. Do not use quotation marks around the string or the string will include the quotation marks.
Screen font	Terminal sessions and information the system displays are in screen font.
Boldface screen font	Information you must enter is in boldface screen font.
<i>Italic</i> screen font	Arguments for which you supply values are in <i>italic</i> screen font.
^	The symbol ^ represents the key labeled Control - for example, the key combination of ^D in a screen display means hold down the Control key while you press the D key.
-->	This pointer highlights an important line of text in an example.
◊	Non-printing characters, such as passwords, are in angle brackets.

Obtaining Documentation

The following sections provide sources for obtaining documentation from e-Watch Corporation.

World Wide Web

e-Watch documents can be found by going to the e-Watch web site www.e-watch.com.

By Mail

e-Watch Corporation
7800 IH 10 West, Suite 720
San Antonio, Texas 78230
210 349-2000

support@e-watch.com

Documentation Feedback

You can submit technical comments about e-Watch documentation in the following ways:

E-mail your comments to support@e-watch.com

To submit comments by mail, write to the following address:

e-Watch Corporation
7800 IH 10 West, Suite 720
San Antonio, Texas 78230

We appreciate your comments.

Obtaining Assistance

The following sections provide sources for obtaining assistance from e-e-Watch Corporation.

Customer Support

For technical assistance please send requests to support@e-watch.com or your local e-Watch reseller. If you have a software maintenance agreement, call 210-349-2000 and ask for Customer Support.

Sales

For assistance with sales or marketing please call 210-349-2000 and ask for Sales or send requests to sales@e-watch.com.

Introduction

e-Watch® Situational Awareness System is a comprehensive surveillance and monitoring system adapted for transmitting Motion Picture Experts Group (MPEG) video streams, high resolution Joint Photographic Experts Group (JPEG) images, Motion JPEG (MJPEG), and detected event data over both wired and wireless networks (Local Area Network [LAN] and Wide Area Networks [WAN]). Third-party systems, such as access control, alarms, and environmental monitoring can be integrated with your e-Watch system.

The e-Watch system is based on standard networking and Internet technology. Real-time data, as well as archived data, can be viewed from any authorized personal computer (PC) on the LAN, WAN, or the Internet. The archive application tracks and maintains all situational awareness information and provides high-speed access for fast location and display of data related to a specific event.

Wireless monitoring is another important component of the e-Watch system. Hand-held wireless devices allow security officers, administrators, police officers, firefighters, and other response personnel to view full motion video from all cameras on the network at geographical positions not bounded by physical wiring. These hand-held devices may be used inside or outside the facility, based on their configuration.

Automated notification of alarm conditions and other events can be provided to response personnel via dial-up circuits, cellular phones, pagers, e-mail, or via the Internet.

Typical Monitor Station

A typical console-style monitor station is PC-based, running Microsoft® Internet Explorer. It can support unlimited VGA monitors, but the standard configuration is 1 to 4 monitors. One of the monitors is configured as the Primary Screen, and the others are configured as Secondary Screens. The primary screen is used for configuring the system and for viewing selected

images or videos. The primary screen also controls all secondary screens. Secondary screens do not need a floppy drive, keyboard, or mouse. Each secondary screen is capable of displaying selected cameras' video in full screen, or an array of 2x2, 3x3, or 4x4 video windows. A ViewWatch station may also consist of only the primary screen. Figure 1-1 illustrates a typical monitor station.



Figure 1-1. Typical Monitor Station

Logging On

SiteWatch™ software uses the Windows Internet Explorer browser and the ViewWatch™ module to provide the user interface. All monitoring and surveillance activity performed by security personnel is conducted through this interface. Before using the system, the user must log on. After logon, the SiteWatch Server loads a series of HTML pages that provide the entire user interface. It is assumed that the user has been assigned a User ID, password, and level of access. It is also assumed that the system has been properly configured and is ready for use. As described below, there are different user access roles and types of logon methods. Site management will determine the appropriate one for you.

Access Roles

The system grants access to users at one of three authorization levels, or Roles. The System Administrator determines the role assigned to each user. There are three pre-defined roles: **User**, **Investigator**, and **Administrator**. The System Administrator may create additional custom roles to accommodate special security needs.

User Role

Users who log on with the User Role may perform the following system functions:

- Assign cameras to panes in the primary and secondary monitors
- Control the screen format (number of panes) in any video window
- View cameras
- View zones
- Save and load presets
- Use basic camera controls

Investigator Role

Users who log on with the Investigator Role have User permissions plus permission to Browse and generate Reports.

Administrator Role

Users who log on with the Administrator Role have all system permissions. In addition to User and Investigator permissions, an Administrator may also:

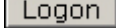
- Configure cameras
- Manage the users and roles
- Adjust the various encoder parameters
- Set up zones
- Set up events
- Set up maps
- Use advanced camera controls

To log on, double click on the **e-Watch** icon located on the PC Desktop. The logon screen as shown in Figure 1-2 will appear.



The image shows a blue logon window titled "e-Watch Logon". It contains two text input fields: "UserID:" and "Password:". Below the "Password:" field is a checked checkbox labeled "Load last settings" and a "Logon" button. At the bottom, there is copyright information: "Copyright 2001-2003, e-Watch Inc." and "Copyright 2001-2003, Photo Telesis Corporation".

Figure 1-2. SiteWatch Logon Screen

To log on, enter your User ID and password and click . After logging on, the Primary Screen will display as illustrated in Figure 1-4.

If Your Desktop Does Not Have An e-Watch Icon:

- To log on locally open **Internet Explorer**, enter the address: **http: / /<server name or IP Address>/ewatch/logon.asp** and press **ENTER**.
- If you are logging on remotely, open Internet Explorer, enter the address: **http://<server name or IP Address>/ewatch/rlogon.asp** and press **ENTER**. This starts a unicast TCP session.
- If you are logging on to a multi-screen monitor station, open Internet Explorer, enter the address: **http://<server name or IP Address>/ewatch/logon.asp/station=<name>** (<name> is the name assigned to the station) and press **ENTER**.

See Figure 1-3 for an example of the Internet Explorer Address field.

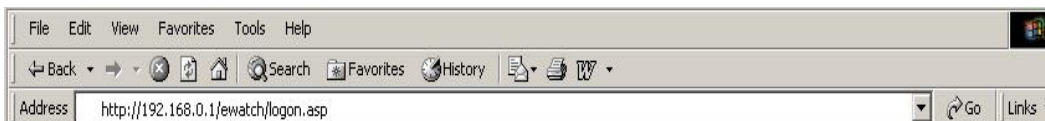
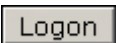


Figure 1-3. Internet Explorer Address Field

The SiteWatch system has three default User IDs that can be used if you have not been assigned a User ID or password. If you have not been assigned a User ID and password, and this is your first time to log on to the system, enter **administrator** as the User ID and as the password and


click . For security reasons, the passwords for these IDs should be changed or the IDs should be deleted after users have been defined. If you wish to log in, but another user has already logged on to the system, click



to display the log on screen.

Logging On Remotely

The SiteWatch system allows users to log on from a remote location. The first time a user logs on, a ViewWatch video filter is downloaded. This process installs the necessary applications to view e-Watch video. The filter download dialog can also be displayed by pressing the F4 key. The number of video panes is limited by the available bandwidth and stream type. The maximum number of streams is 4.

To log on to SiteWatch from a remote system, open Internet Explorer and type in the address **http://<server name or IP Address>/ewatch/rlogon.asp** and click  .

Bandwidth Option

The remote logon screen offers the option of “Low resolution” or “High resolution”. If you select “Low resolution”, only the cameras’ low resolution video streams will be displayed. Use this option for low-bandwidth connections.

Available Bandwidth Option


If you choose the “Low resolution“ option, the remote logon screen also offers an “Available bandwidth” option. Choose your available bandwidth from the pulldown list prior to logging on. SiteWatch will attempt to keep the total bit rate of all Motion JPEG streams sent to your remote ViewWatch station below the selected bit rate. This option does not affect the bit rate of QSIF MPEG streams.

Motion JPEG Only Option

If you choose the “Low resolution“ option, the remote logon screen also offers a “Motion JPEG Only” option. To use this option, the registry value AllowAutoMjpeg on the SiteWatch Server must be set to **true**. You can use this option to take fullest advantage of the Available Bandwidth option.

Using Local Cache

Normally, e-Watch pages are downloaded from the server each time a user logs on. This guarantees that the latest pages are always used. For users who have a very slow connection or who experience frequent network interruptions, better performance may be obtained by using Internet Explorer’s local cache.

To log on to SiteWatch from a remote system and use the local cache, open Internet Explorer and type in the address **http://<server name or IP Address>/ewatch/rlogon.asp?cache** and click  .

Single Pane Logon

The Single-Pane logon enables a user to logon with only a single video pane displayed. This type of logon might be used when video streaming is only available over low bandwidth, such as via a satellite link. Attempting to view more than one pane of video over low bandwidth could cause system errors. To log on to SiteWatch with only a single video pane, open Internet Explorer and type in the address **http://<server name or**

IP Address>/ewatch/logon.asp?station=lbw and click



Internet Explorer Security

When you open the SiteWatch Logon Screen, the Internet Explorer Security Warning shown in Figure 1-4 may appear.



Figure 1-4. Internet Explorer Security Warning

The Internet Explorer Security Warning is normal, and does not mean that an error has occurred. Click **Run** to run the SiteWatch software. If you do not want to see the Internet Explorer Security Warning each time you log on to SiteWatch, click **Always run software from "e-Watch Corporation"**.

Remote Server

This feature allows you to view and access a remote server as if it were part of the local server. This is different from logging on to a remote server as described earlier. The difference is that you simply log on to your normal server and from there view and control the remote server. This feature has the benefit of using almost all the capabilities of the ViewWatch™ system. Remote servers must be pre-configured by the system administrator. Please see the administrator guide for details. You will notice a server drop down list on some screens as you go along and use the ViewWatch™ system. That is your indicator that a remote server is connected. To use the remote server, simply select the name of the remote server and the features of the screen will change to control the remote server. As we go along in this user guide you will see a server drop down list on some images, don't worry if you don't see it on your screen.

The Primary ViewWatch™ Screen

After logging on, the **Primary Screen** will display similar to Figure 1-5.

Note: if external servers are not connected then the list server button will not be visible.

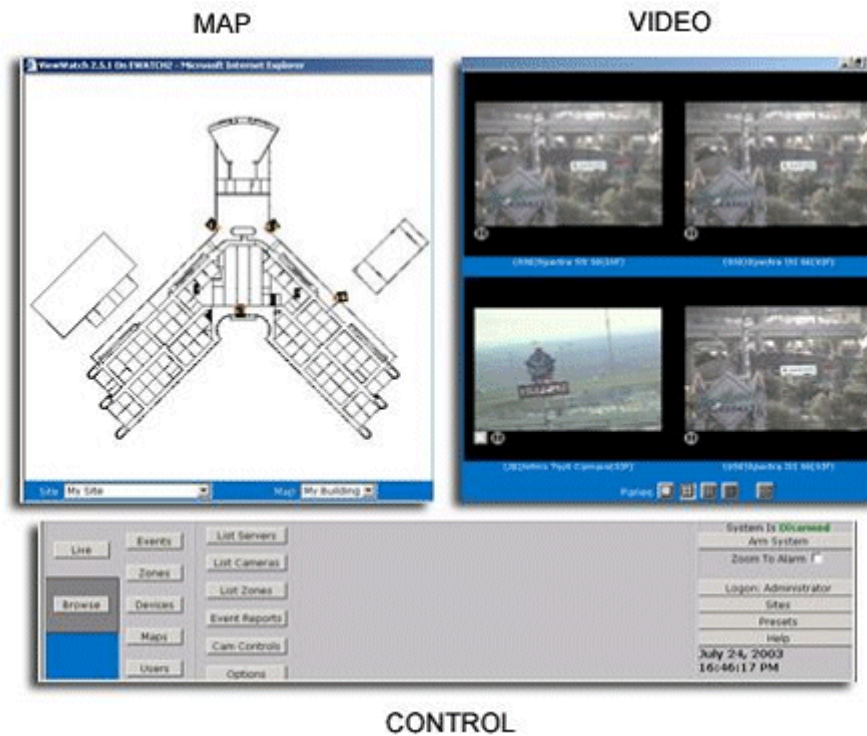


Figure 1-5. The Primary ViewWatch™ Screen

From this screen, you can control all functions of the SiteWatch system. The screen is divided into three windows: Map window, Video window, and Control window.

The Map Window

The map window, located in the upper left of the ViewWatch screen, contains a map of the facility. The map source is an image file stored on the server. There may be a series of maps stored on the server if the facility has multiple locations, or if the facility is too large to be displayed conveniently on a single map.

Each map contains icons representing cameras within the facility and showing their location on the map. Camera icons indicate the direction the camera is pointed. Figure 1-6 illustrates a facility map with camera icons.

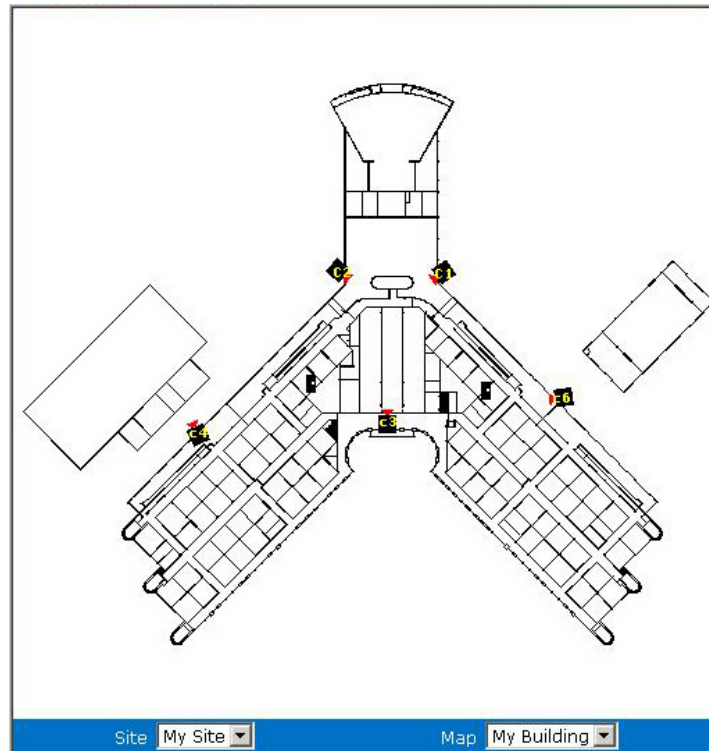


Figure 1-6. Facility Map with Camera Icons

When the mouse pointer dwells over a camera icon for a brief interval, a text box appears showing the friendly camera name. Each camera has a unique alphanumeric Camera ID used to control the camera. The server maintains this unique ID, regardless of the friendly camera name. The ID cannot be changed by the user through the user interface. Figure 1-7 shows an example of a friendly camera name.



Figure 1-7. Text Box Showing Friendly Camera Name

Map Icons For Third-Party Devices

Third-party devices may be integrated with the e-Watch system through the optional GateWatch™ Third-Party Integration Software. These devices may include third-party access keypads, smoke alarms, and perimeter security implements. These devices are represented on the map by a door

icon. The icon blinks in color when the device triggers an alarm. Right-clicking on the icon displays a menu for displaying the popup alert status or the Devices menu.

Map Window Actions

When the camera icon on the map is double-left clicked, the camera's video appears in the video window in full screen view. If the icon is right-clicked, a menu box appears with choices for further operations: based on your authority level. Hovering the mouse over an active video pane causes the camera icon to be highlighted. Hovering the mouse over the icon displays its friendly name.

The user may "drag and drop" the camera icon into any used or unused pane in the video window. The "drag and drop" operation causes the selected camera's video to appear in the selected pane. The position of the map icon is not affected by the "drag and drop" operation.

Two pull-down lists are located directly beneath the map pane, labeled Sites and Map. The Sites pull-down list contains a list of sites. It also keeps track of all of the site maps the user visits during the current session. The Map pull-down list contains all maps associated with the site selected. The pull-down lists may or may not contain more than one site or map, depending on the user's requirements.

The Video Window

The video window is located in the upper right area of the ViewWatch screen. It is used to display video streams from the selected e-Watch camera(s), and to control the secondary screens. Figure 1-8 illustrates the video window in full screen view.

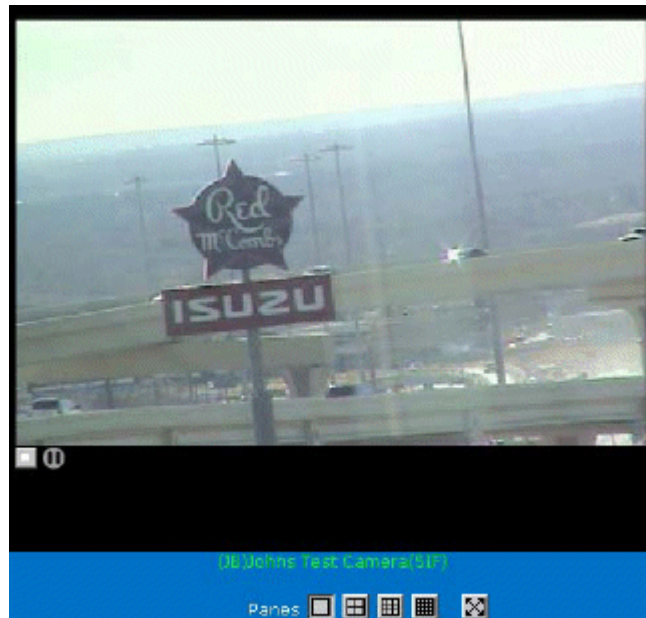


Figure 1-8. Video Pane in 1x1 View

The video window may be configured as a single large video pane, or may be subdivided into as many as sixteen video panes. Special icons may or may not be visible under the running video. These icons will be covered in more detail later in this chapter. The Video Panel Label is positioned immediately under the video pane. For inactive panes, the pane number is displayed in the label. For active panes, the map tag, camera name, and video stream type are displayed. Below the video label is a series of buttons labeled Monitor and Panes. Figure 1-9 shows the Monitor and Panes buttons located beneath the video window.

Note: If you only have a Primary Screen, the Monitor buttons will not be displayed.



Figure 1-9. Monitor and Panes Buttons

When viewing locally, the user can select how many video streams to display by clicking on one of the Panes buttons. In all cases, the aspect ratio is maintained at the standard 4:3 produced by the camera. A border surrounds each pane. The friendly camera name is displayed directly under the appropriate pane. When the video window is configured as one or four panes, SiteWatch displays a high-resolution video stream. When configured as nine or sixteen panes, SiteWatch displays low-resolution video streams. Figure 1-10 shows the video window configured with four

video streams. When viewing remotely, the configuration is dependent on the user's selection at log on.

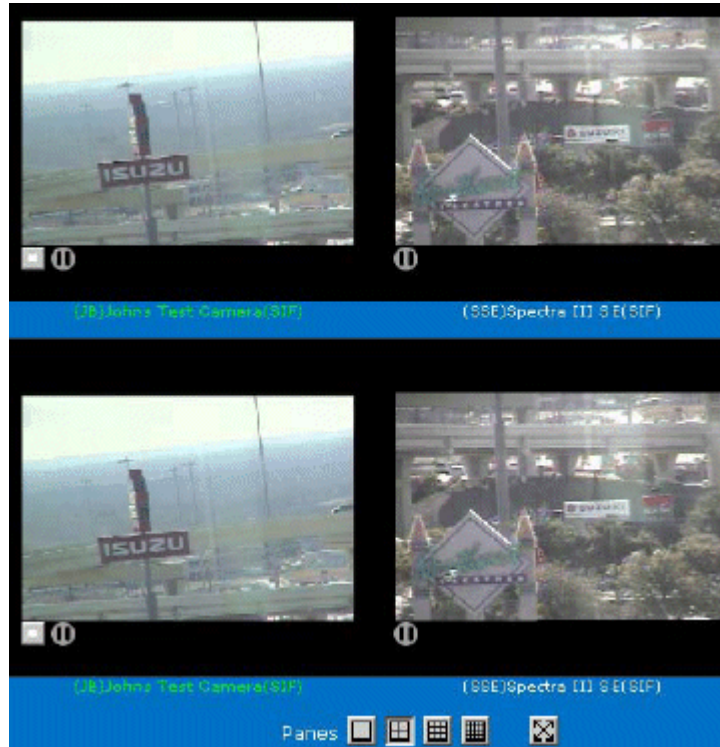


Figure 1-10. Video Window Configured with Four Panes

The button on the right is labeled “Full Screen”. Clicking the Full Screen button opens a window that displays the video panes in full screen mode. You can use the Alt-Tab key sequence to switch between the main window and the full screen window.

Video Window Actions

To display a camera's video stream, left-click on the desired camera icon on the map and "drag and drop" it into the video pane. If the video window is configured for 4, 9, or 16 panes, drag and drop each desired camera to a pane.

When a video stream is displayed, you can:

- Double-click the video pane to display the video stream in single-pane mode.
- Right-click the video pane to display an action menu. The Action Menu includes:
 - > Camera friendly name
 - > Motion alarm status (when appropriate)
 - > Panic Button status (when appropriate)

- > Video Properties - display video properties
- > Wireless Status (if camera is wireless)
- > Wireless Receive Statistics (if camera is wireless)
- > Wireless Transmit Statistics (if camera is wireless)
- > Events - Admin Only
- > Zones - Admin Only
- > Cameras - Admin Only
- > Buffer Size
- > Camera Controls - displays Camera Controls dialog window
- > Full Screen - covered in more detail later in this chapter
- > Stop - removes the video from the video pane

The border surrounding any individual video pane blinks when an Event associated with the camera is detected.

To remove a video from a pane, left-click on the video pane, hold the mouse button down, and "drag" the video anywhere outside the video window.

To move a video stream from its original pane to another pane, initiate a "drag and drop" by placing the pointer on the video pane or on the camera name and pressing and holding the left mouse button. The "drag and drop" operation causes the selected camera's video to be removed from the original pane and to appear in the newly selected pane.

If a video stream is "dropped" into a video pane where a video stream is already playing, the new video stream replaces the old video stream.

Video Window Icons

One or more icons may appear along the bottom of the video pane to provide quick access to commonly used functions.




-  Clicking this icon causes ViewWatch to switch to browse mode, and to display the most recent high-resolution JPEG image.
-  This icon is displayed only if the camera has a defined motion detect mask that excludes some of the field of view from causing a motion alarm. Clicking this icon pauses the video and displays the motion detect mask as a translucent gray overlay.
-  This icon is displayed only if the camera has an audio card. Clicking this icon toggles the audio between audible and muted. Right-click the icon to display the audio controls dialog, shown in Figure 1-11.



Figure 1-11. Audio Controls Dialog

The Mute All button will mute the audio in all video panes.

The Control Window

The Control Window is located across the bottom of the ViewWatch screen. The right side of the window contains controls that are always visible, as identified below. These controls will be discussed in more detail later.

- Notification the system is Armed or Disarmed
- Arm/Disarm button
- Zoom to Alarm checkboxes
- Logon button
- Sites button
- Presets button
- Help button
- Real-time clock

The left side of the Control Window contains two buttons labeled **Live** and **Browse**. Clicking the Live button places the ViewWatch screen in Live Mode. Clicking the Browse button places it in Browse Mode. These buttons are visible only if you have Investigator or Administrator authority.

The next list of buttons is only available for administrative level users. They include Events, Zones, Devices, Maps, Sites and Permissions. Further explanation of these buttons is available in the Administrator's Guide. Figure 1-12 shows the Control Window for someone with Administrator permission.



Figure 1-12. Control Window in Live Mode with Administrator Permission

The next column of buttons is used to list Remote Servers (if connected), Cameras and Zones at the site, prepare Reports, control the cameras, and configure ViewWatch options. Figure 1-13 shows the Control Window for someone with User permission.



Figure 1-13. Control Window in Live Mode with User Permission

Investigator permission allows access to Browse Mode. In Browse Mode, the center portion of the control window displays controls used to view archived images. Figure 1-14 shows the Control Window in Browse Mode

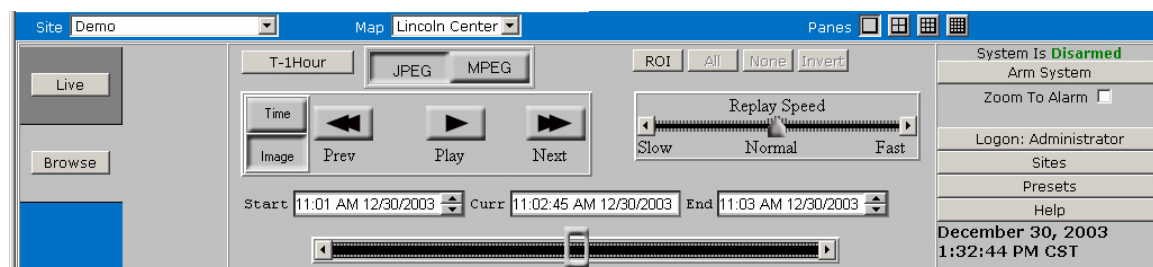


Figure 1-14. Control Window in Browse Mode

ViewWatch Options

The ViewWatch Options dialog provides an interface for setting various ViewWatch station options. Click the Options button in the Control Window to display the ViewWatch options dialog, shown in Figure 1-15.

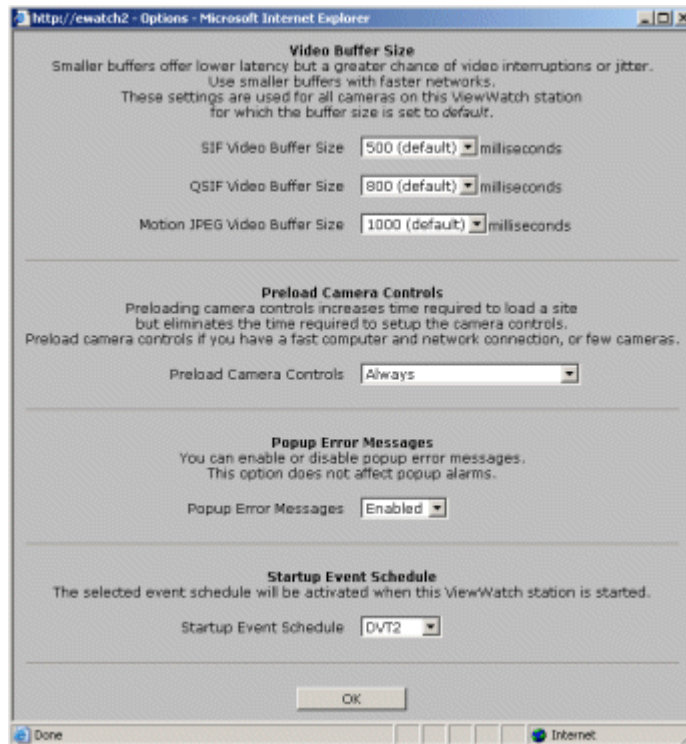


Figure 1-15. ViewWatch Options Dialog

Video Buffer Size

The video buffer size option sets the default video buffer sizes to use with each type of video stream. SIF MPEG, QSIF MPEG and Motion JPEG. Smaller buffers offer lower latency but a greater chance of video interruptions or “jitter”. You can use smaller buffers with faster, more reliable networks. If you experience video “jitter”, try using larger buffers. The default settings work well for most networks.

The video buffer size can be set for individual video streams by right-clicking the video window, then clicking Buffer Size on the action menu.

Pre-load Camera Controls

This option determines whether camera control data is pre-loaded when you load a site. The choices are:

1. Default - use the default setting provided by your System Administrator
2. Always - camera controls are always pre-loaded
3. Never - camera controls are never pre-loaded
4. Background - camera controls are loaded in the background after a site has been loaded

Pre-loading camera controls eliminates any delay when you click the Cam Controls button to open the Camera Controls window. However, if you have a very large number of cameras, pre-loading camera controls can cause a significant delay. In this case, you may wish to use the *Background* option. If you seldom use the Camera Controls window, choose the *Never* option.

Popup Error Messages

You can enable or disable popup error messages. Popup error messages are sent to named ViewWatch stations to notify you of errors detected by the SiteWatch Server. If you do not wish to receive popup error messages on your ViewWatch station, set this option to *Disabled*.

NOTE: Disabling popup error messages has no effect on popup alerts. You will still receive popup alerts if an alarm is detected and the system is armed.

Startup Event Schedule

You can specify which event schedule, if any, should be activated when you log on to ViewWatch. See Chapter 5 for details on setting up Events and Schedules.

Setting The Buffer Size For A Specific Camera

Video buffer size can be set for a specific camera. The setting is in effect only for that specific camera at that specific ViewWatch station. The setting remains even when ViewWatch is stopped and restarted. Figure 1-16 shows the buffer size dialog box

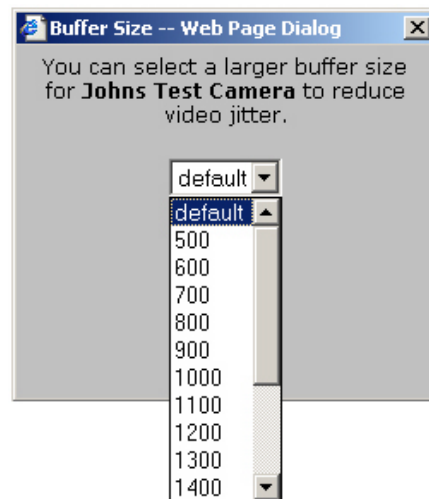


Figure 1-16. Specific Camera Buffer Size Dialog

Full Screen Mode

This mode is single video full screen. This feature will set a selected video to full screen. To activate this feature right click on a running video. Select Full Screen from the menu. To deactivate full screen, simply click on any part of the running video



Figure 1-17. Full Screen Mode

Video

To display live video from a camera, first click the Live button located on the Control window. If you are logged on with User authorization, live mode is the default and the Live button will not be present. The upper right pane of the ViewWatch screen is used to display video from the selected camera(s).

To View Video

Basics

- a. Click on a camera icon on the Map window and "drag and drop" the camera to a video pane. When the mouse pointer is placed over a camera icon, it changes to the shape of a hand with pointing finger. If left to dwell for a brief moment, a text box will appear with the friendly camera name. As you hold the mouse button down and drag the camera off the map, the hand changes to a four-sided cross. As you continue to drag the camera, it changes back to a hand when you enter the video pane. At this point, drop the camera. Live video from the camera will display. Drag and drop other cameras as desired until all selected video panes are filled. The same camera's video may be displayed in more than one video pane at the same time. The drag and drop operation may be terminated any time prior to dropping the camera in the video pane.
- b. Alternatively, click the List Cameras button to display the list of cameras for your site. Click and drag any camera from the list to a video pane. If video is already playing in the pane, the new camera's video will replace the old.
- c. Alternatively, click the List Zones button to display the list of zones.

Note: When running e-Watch Version 2.5.1 on Windows 2000 and below with Microsoft Media Player 9 installed, the mouse pointer always has an arrow appearance when over an active video pane, instead of a hand appearance.

Details

In **Live** mode, the Video Window displays real time surveillance information. Video may be displayed on up to three additional (secondary) monitors. Controls for additional monitors appear on the primary screen. These controls labeled *Monitor* and *Panes* are found directly under the video window on the primary screen as shown in Figure 2-1.



Figure 2-1. Monitor and Panes Controls

Each monitor may be configured to display video from 1, 4, 9, or 16 cameras. To change the monitor being controlled, click on the icon which corresponds to that monitor in the *Monitor* section of the video controls. The Primary Screen will display the panes from the monitor selected, unless **P** (Primary) is selected. To change the number of panes displayed, click on the corresponding icon in the *Panes* section of the controls. Each monitor may display a different number of panes. To display the panes in full screen mode, click the Full Screen button. You can use Alt-Tab to switch back and forth between the Main Window and the Full Screen Window.




When the number of panes on a monitor is increased, the new panes will be blank. The **Map** window contains several icons representing cameras. To display the video from a camera in a monitor's pane, drag the map icon for that camera to the pane in which you would like the video displayed. The video from that camera will appear in the pane. The text description of that camera's location will appear below the display.

To view a list of the currently connected remote servers, click [List Servers](#)

Note: This button will only appear if there is at least one remote server connected.

To view a list of cameras available, click [List Cameras](#) in the control window. You may also view video from a camera by dragging it from this list to the desired pane.

Example: You would like to display 16 panes on Monitor #3, and you want the video from Camera #8 to be displayed in the first pane.

1. Click on button  from the Monitor control.
2. Click on button  from the Panes control to select 16 panes.
3. Drag camera #8  from the map to the first pane of the video display. Video from camera #8 will display in the first video pane (upper left) as shown in Figure 2-2.

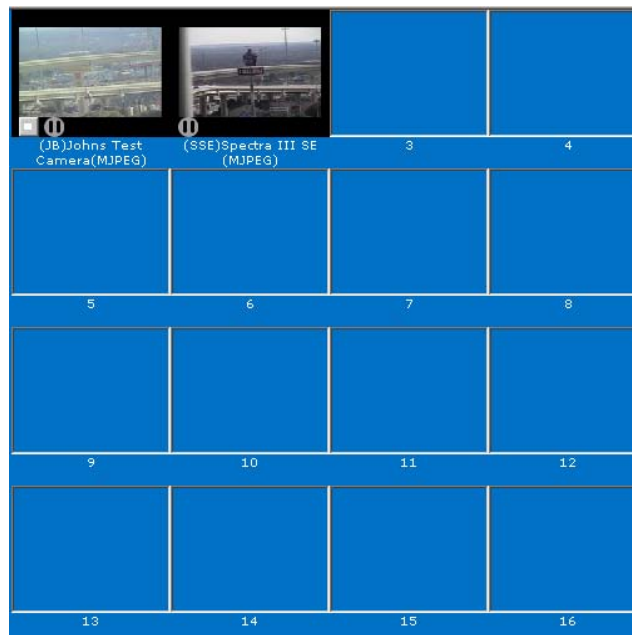


Figure 2-2. 16 Video Panes Display

Viewing Video From Other Servers, Maps, and Sites


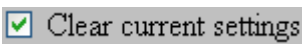

e-Watch is designed to allow surveillance of multiple facilities or campuses. Through use of Site and Map selections, it is possible to view cameras and security device locations at any site. The controls to manipulate the sites and maps are located directly under the Map Window as shown in Figure 2-3.



Figure 2-3. Sites and Maps Controls

Sites

The **Site** menu lists all sites under surveillance by your e-Watch system. To view the list, click on the pull-down **Site** menu. To view a map of a site, click on the name of that site. To access a site from this menu, it must first be loaded.

To load a site, click the  button located on the right side of the Control Window. Highlight the desired site and click the Load button. If you wish to clear all loaded sites, click . Click  to load the site. Figure 2-4 shows an example of how to select a site from the Site pull-down menu when several sites are loaded onto an e-Watch system.

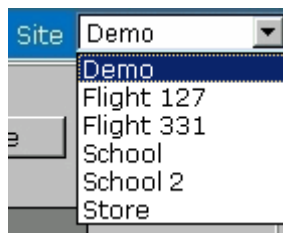


Figure 2-4. Several Sites Loaded on an e-Watch System

Maps

Each site may contain different maps. For example, one site may be a three-story building. To view different maps for a site, click on the pull-down Map menu and click the name of the map you desire to see, as shown in Figure 2-5.



Figure 2-5. Selecting a Map from the Pull-Down Menu

Once a site and map have been selected, that site's video may be monitored in the Video Window as previously described. Cameras from any position on any map may be monitored from one location.

Servers

If remote servers are connected you can switch to the sites from those remote servers and view their sites and maps. To do this, click the

Sites button located on the right side of the Control Window. Notice the sites window came up. If you see a Server drop down list, you have remote servers connected. From the server list select the server that you want to view. Notice when you select the server, the sites changes to show the sites in that server. Now follow the procedure for sites and maps described earlier.

Camera Controls

e-Watch cameras can be controlled from the Primary Screen via the Camera Controls button in the Control window. To display the Camera Controls Window, click the **Cam Controls** button.

Different cameras support different sets of video controls. Some cameras may have more capabilities than others. The system will display the available controls for that specific camera. If **Auto** is engaged on any controls, the manual control for that feature is inoperative. Figure 2-6 shows the Cam Controls window and Table 2-1 describes the controls.

Note: Administrative level users have access to more advanced camera controls.

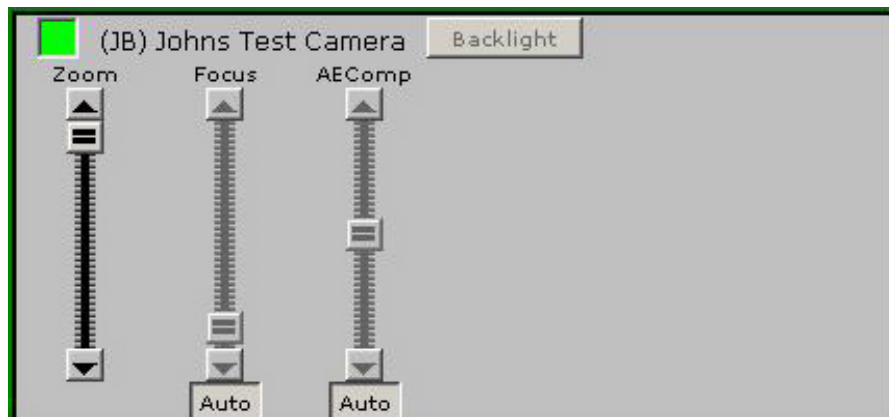


Figure 2-6. Cam Controls Window

Table 2-1. Explanation of Camera Controls

Control	Function
Zoom	Controls the camera's zoom in/zoom out feature
Focus	Controls the camera's focus
Auto AE Comp	The reference level for the auto exposure

Control	Function
Backlight	Compensates for a high degree of illumination which obscures an image

Pan/Tilt

Some cameras are capable of pan/tilt action. Depending on the type of camera the pan/tilt can be controlled from a joystick or from the user interface. This allows the camera to move left/right, up/down, enabling the user to view different portions of a room or area. The user interface pan/tilt controls are split into two versions. The first version only has direction controls. The second version is for devices with proportional controls such as the Pelco Spectra devices.

Pan/Tilt Version One

This version of the pan/tilt control does not have variable speed (Figure 2-7). This version of the control will appear with the camera controls of a pan/tilt camera that does not have variable speed. To use it simply click on one of the arrows for the direction you want the camera to move to. This version of the control does not work with the joystick.



Figure 2-7. Pan/Tilt Control Without Variable Speed

Pan/Tilt Version Two

The second version of the pan/tilt control has added functionality for variable speed cameras (Figure 2-8). The red dot in the center represents center point at 0 speed. To move the camera click and drag the dot in the direction you want the camera to move. Release the mouse button when the camera has reached the desired position. Pay attention to the distance you drag the dot from the center. As the dot goes out further the camera will increase its speed. This control also has zoom in and out capabilities.



Figure 2-8. Pan/Tilt Control With Variable Speed

Both Pan/Tilt controls are located on the Cam Controls Window and only display when a camera with Pan/Tilt capability is selected. If the camera is a Pelco camera, the Cam Controls button is covered and hidden by the camera controls dialog box when opened. To close this camera controls dialog box, click the X in the window's upper right corner. Figure 2-9 shows the Cam Control Window with the Pan/Tilt control

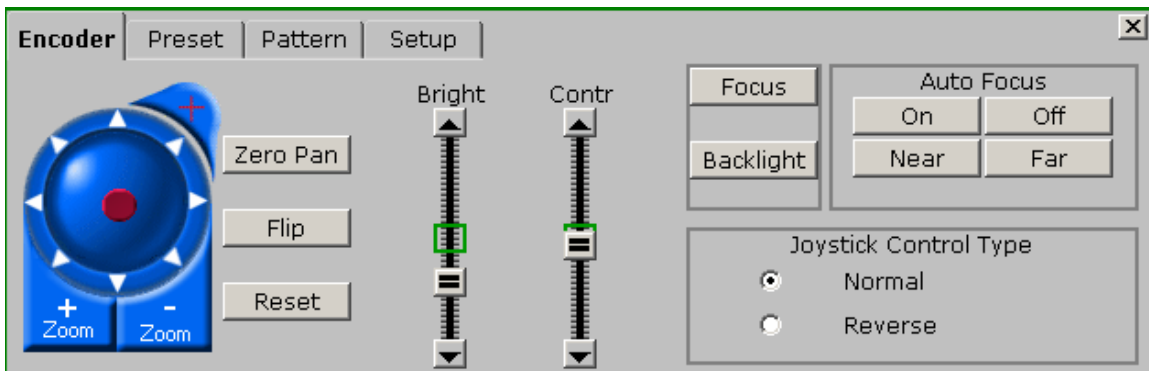



Figure 2-9. Cam Controls With Pan/Tilt

Note: This tab may not be visible.  This is part of the advanced pan/tilt/zoom controls and will be covered later in this chapter.

Pelco Spectra II/III Controls

1. Encoder. The Encoder (See Figure 2-9) allows the user to set the camera brightness, contrast, focus, backlight compensation, and other parameters. Table 2-3 explains each encoder control and function.

Table 2-3. Encoder Controls

Control	Function
Zero Pan	Resets the camera to its pan starting point.
Flip	Flips the camera view from current view to obverse view.

Table 2-3. Encoder Controls

Control	Function
Reset Cam	Resets camera to starting point.
Zoom +	Zooms the camera in.
Zoom -	Zooms the camera out.
Bright	Controls the brightness of the video displayed from the camera.
Contr	Controls the contrast of the video displayed from the camera.
Focus	Allows Focus to be turned on or off and determines the depth of focus. If Near is selected, the camera focuses on points near the camera, whereas it focuses on points further away when Far is chosen.
BC (Backlight Compensation)	Allows backlight compensation to be turned on or off.

2. Preset. The Preset function allows the user to setup preset camera views. Up to 20 presets can be created. Figure 2-10 shows the Preset window.

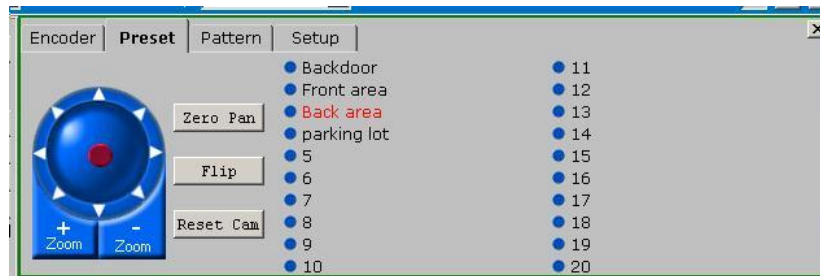


Figure 2-10. Preset Window

To create a preset, follow the steps below:

- Click on the Preset edge tab.
 - Click on the red pan/tilt control dot and move the camera to the desired object or scene.
 - Right-click on one of the numbered available blue preset dots to display the preset name dialog box. Accept the default preset name or enter a new name and click on Set Preset. Now, click on any preset blue dot to direct the camera to that preset position. The preset name changes to red when selected, indicating that the camera is set to that preset view. When the camera is moved using either the joystick or pan/tilt control, any preset name displayed in red font is reset to black font.
3. Pattern. A pattern is a memorized, repeating series of pan, tilt, zoom and preset functions that can be recalled. It allows the user to setup a viewing pattern that can be used over and over. For example, a user

may want to scan a parking lot beginning at one end and slowly pan to the other end. Once set, the pattern can be run over and over until stopped. Figure 2-11 shows the Pattern setup window.

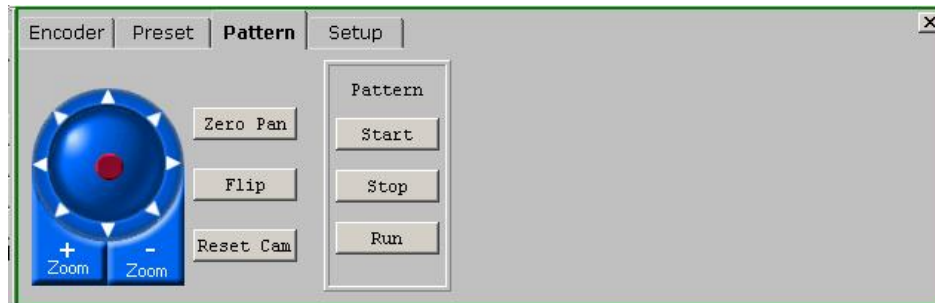


Figure 2-11. Pattern Window

To setup and run a pattern, follow the steps below:

- Click on the Pattern edge tab.
 - Click the Start button. This starts the recording of the pattern.
 - Click on the red dot pan/tilt control and pan the camera over the area desired.
 - Click the Stop button when you have finished panning the desired pattern.
 - Click the Run button to run the pattern just created. The pattern will continue to run until stopped.
 - Click the Stop button to stop the pattern.
4. Setup. The Setup function allows the user to open the camera menu for setting the camera parameters. These are detailed settings that are normally setup by administrator or system configuration personnel. Our discussion will be limited to a brief overview of the buttons and controls. For detailed information, please refer to the camera manufacturer's technical manual. Figure 2-12 shows the Setup Window

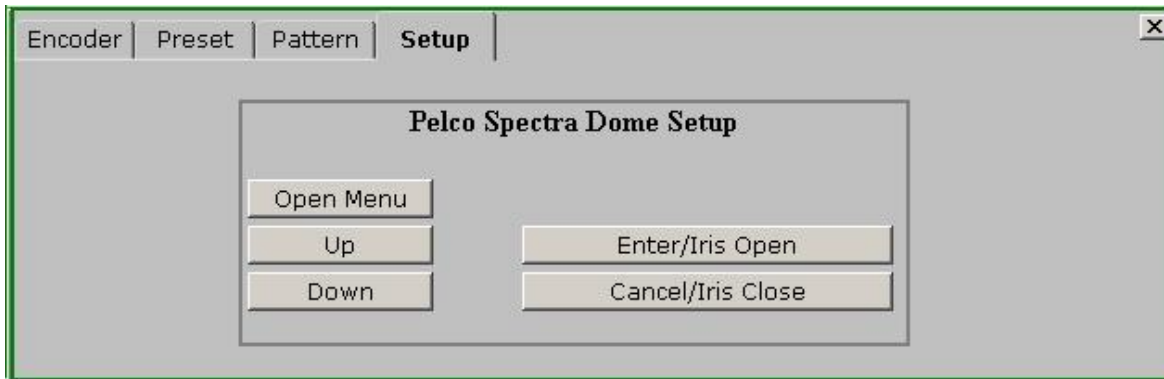


Figure 2-12. Setup Window

To configure Setup, follow the steps below:

- Click on the Setup edge tab.
- Click Open Menu. An overlay text menu will appear on top of the camera video.
- Use the Up and Down button to select the desired menu item.
- Click the Enter/Iris Open button to enter the submenu for the selected item. Click the Up or Down button to make submenu selections.
- Click Cancel/Iris Close button to exit submenus or cancel current operation.
- After making desired parameter changes, use the Up and Down buttons to move the cursor to Exit.
- Click Enter/Iris Open to exit the menu and close the text from the video.
- Text. The Text control enables the user to overlay informational text on the video display. This capability is not available on the Pelco III. To overlay text:
 - Click on the Textbox edge tab to display the text box.
 - Type desired text into text box.
 - Click the Send button. The text will overlay the video.
 - Click Clear to remove the text.

Joystick Control of Pelco Spectra II/III Camera

A joystick may be used to control the Pelco Spectra II/III camera. The joystick is active when the Camera Control Dialog is visible for a Pelco Spectra II/III dome camera. Moving the joystick causes the camera to pan and tilt in the same direction as the joystick. The pan and tilt speed is

proportional to the distance the joystick is moved from the center position. If equipped, pressing the right joystick thumb button causes the camera to zoom in. Pressing the left joystick thumb button causes the camera to zoom out.

Note

This feature was developed and tested on a Microsoft SideWinder joystick. Other joysticks may be compatible. Please verify the joystick is properly installed and configured with your operating system.

Joystick Crosshairs

This feature is for the Pelco Spectra III with firmware version 1.22 and above. Please note the firmware requirement is for the Pelco dome and not for the e-Watch encoder. Please refer to [Pelco](#) for firmware upgrade procedures of the Spectra III. Microsoft Windows XP is also required to operate the joystick crosshairs.


The joystick crosshairs will only activate if the controls dialog for a Spectra III is open and the panes are set to 1x1. To activate it, click the thumb button on the joystick. This will cause red crosshairs to appear on the video. Move the joystick around while still holding the thumb button. Once you have the cross hairs on a spot, release the thumb button. This will cause the dome to center on whatever you selected with the crosshairs.



Figure 2-13. Joystick Crosshairs

Advanced Pelco Spectra III Pan/Tilt/Zoom Controls

Advanced pan/tilt/zoom controls are available for the Pelco Spectra III with firmware version 1.22 and above. Please note the firmware requirement is for the Pelco dome and not for the e-Watch encoder. Please refer to [Pelco](#) for firmware upgrade procedures of the Spectra III. Microsoft Windows XP is also required to operate the advanced Pelco Spectra III Controls.

The advanced controls are available when the video panes are set to 1x1 or 2x2. You can enable the advanced controls by clicking the  tab that is

located on top of the pan/tilt control. The advanced controls include the Field Of View Pan/Tilt, Click To Pan/Tilt, Mousewheel Zoom, Follow The Mouse, and Pan/Tilt/Zoom To Box controls.

Field Of View Pan/Tilt

This feature allows you to pan and tilt the camera one field of view at a time. When the advanced controls are enabled, red arrows appear on each side of the video pane. Click on one of the red arrows to have the camera move one field of view in the direction of the arrow.

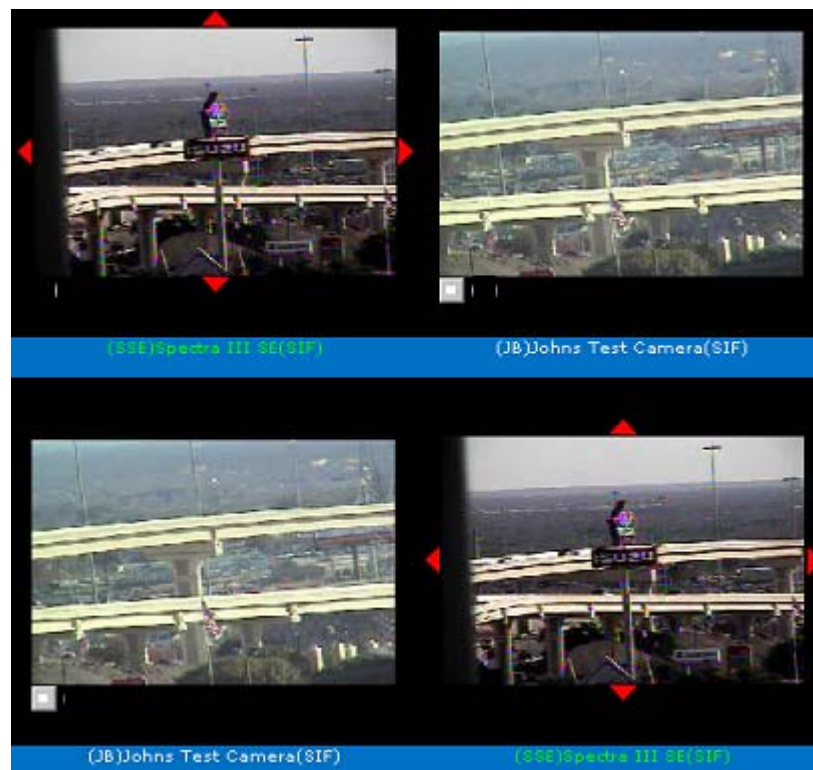


Figure 2-14. Field Of View Pan/Tilt Control

Click To Pan/Tilt

This feature allows you to pan and tilt the camera using the computer mouse when the advanced controls are enabled. Left-click anywhere in the video pane, and the camera will pan and tilt to center on the clicked position.

Mousewheel Zoom

This feature allows you to zoom the camera using the computer mouse when the advanced controls are enabled. Roll the mousewheel forward to zoom in, or roll the mousewheel back to zoom out.

Follow The Mouse

This feature allows you to control the camera interactively using the mouse when advanced controls are enabled. Press and hold the Control (Ctrl) key. The mouse pointer will automatically move to the center of the video pane. Move the mouse pointer way from the center of the video pane, and the camera will pan and tilt in that direction. The pan and tilt speed will be proportional to the distance from center of the video pane to the mouse pointer. With a little practice, you can “lead” a moving object with the mouse pointer, and the camera will follow the object.

Pan/Tilt/Zoom To Box

This feature allows you to pan, tilt and zoom the camera using the mouse when advanced controls are enabled. Press and hold the Alt key. Position the mouse pointer in the video window, press and hold the left mouse button, then drag the mouse pointer to draw the box. When you release the left mouse button, the camera will pan and tilt to the center of the box, then zoom in so that the box fills the video pane. If you have made a mistake you can release the Alt key before releasing the left mouse button, and the operation will be cancelled. See Figure 2-15.



Figure 2-15. Pan, Tilt And Zoom To Area Of Interest

The Browse Function

In addition to providing real-time video surveillance, the SiteWatch™ system archives video received from system cameras. Video may be archived as still images, which are saved in JPEG format when motion is detected, as an MPEG video file or as a Motion JPEG file. Archived files are stored on the SiteWatch server. Archive parameters for a camera can be set up via Devices and the Camera Definition window. This is discussed in more detail in the SiteWatch Administration Guide.

Playback Controls

To view archived surveillance data, click **Browse** in the control window. The control window will display a video playback console as shown in Figure 3-1. This feature is only available to users with Investigator or Administrator privilege.

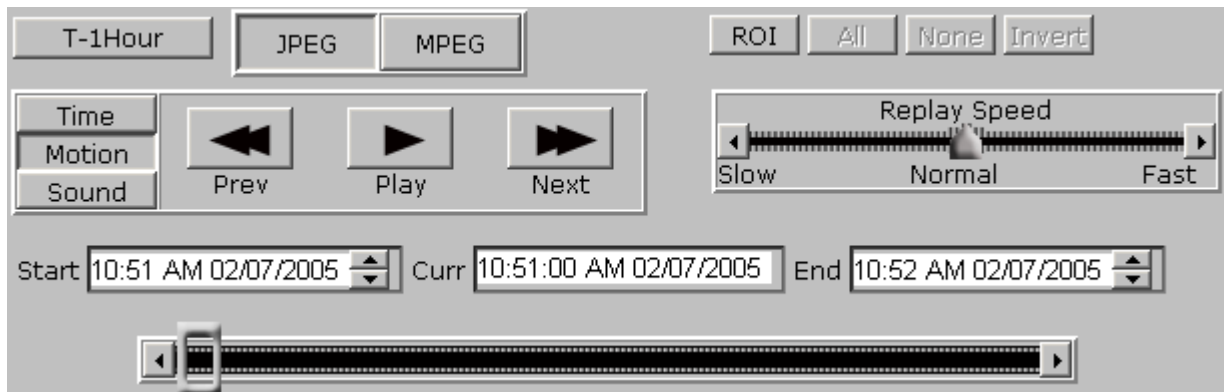


Figure 3-1. Video Playback Controls

Table 3-1 describes the video playback controls.

Table 3-1. Description of Video Playback Controls

Button or Function	Description
T-1 Hour	Provides option to quickly select the current day and the immediately preceding hour.
JPEG	Selects JPEG mode where captured JPEG images will be replayed.
MPEG	Selects MPEG mode where MPEG or Motion JPEG video clips will be replayed.
Region of Interest (ROI) Filter	Defines an ROI within a video pane where only motion detected in the ROI is replayed.
All	Select the entire video region with motion detection.
None	Deselect the entire video region with motion detection.
Invert	Invert ROI selections.
Time	Replays images in real time, even during periods of no motion or sound.
Motion	Replays images during periods of detected motion.
Sound	Replays images during periods of detected sound.
Play/Pause	Enables images or video clips to be displayed, or pauses the display.
Prev (Previous)	Displays the immediately preceding image. Only active during Play mode under JPEG selection.
Next	Displays the immediately succeeding image. Only active during Play mode under JPEG selection.
Replay Speed control	A slider bar regulating how rapidly images are displayed, ranging from Slow to Fast. The Normal position in the center of the slider bar corresponds to "real-time" speed. Only active during play mode under JPEG selection.
Video Size control	Permits MPEG video clips to be replayed in original size (1x), double size (2x), or full size (Full). This control is only available when MPEG is selected. It replaces the Replay Speed control.
Start, Curr (Current), End Fields	Allows user to manually enter the Start and End date and time. When the Play button is activated, the Curr (Current) field shows the actual date and time of the displayed image or video clip.

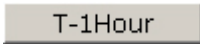
Button or Function	Description
Progress Control	Located below the Replay controls, this slider bar graphically represents the date and time of the image displayed in the video window relative to the Start and End times. The slider can be "grabbed" with the mouse and then "dragged" by moving the mouse to any desired position on the bar. The image associated with the new position of the slider will be displayed in the video window.

Typical Browse Example

The following steps illustrate how to perform a replay of archived video.

1. Click the **Browse** button on the Control window.
2. Click the **Single Pane** button in the Panes control to display one video screen in the video window. Sub-screens may also be selected, but for this example, one will suffice.
3. From the Map window, select a camera and drag it to the video pane. A progress bar will appear showing the video frames being loaded from the server. While loading, a Cancel Load button will appear. Left-clicking on the Cancel Load button cancels the current load process.
4. Manually enter the Start and End dates and times, or click the T-1Hour button to select the immediately preceding hour.
5. Click the JPEG button to replay captured JPEG images for the selected time frame. Double clicking on a displayed JPEG images causes the image to be loaded into a new window. Right-clicking on the image in the new window opens a context menu for saving the image, e-mailing the image, etc.
6. Click the MPEG button to replay video clips for the time frame selected. The highest resolution MPEG available will be displayed. If no MPEG video is available, Motion JPEG will be displayed. If no MPEG or Motion JPEG video is available, JPEGs will be displayed.
7. Select Time or Image.
8. Click the **Play** button. Archived video for the selected camera will be displayed in the video window. To stop the replay, click the **Pause** button.
9. Click and hold the shuttle on the slider bar at the bottom and move the mouse right to advance to any section of the video instantly, or move to the left to regress.

Tips

You may select any time interval to view by manually setting the **Start** and **End** settings. **Curr** indicates the time at which the video you are currently viewing was recorded. Clicking  will set the start time exactly one hour prior to the current time.

The video will appear in the video window of the Primary Screen. If you have secondary screens, they will continue operation as previously set up. You may view synchronized archived video from different cameras in up to 16 panes on the primary screen.

The **JPEG/MPEG** switch controls the playback media.

- **JPEG** mode displays images taken at intervals. It also activates the **Replay Speed** control and the **Prev** and **Next** controls. The **Replay**

- Speed** controls the rate at which the video is played back. The **Prev** and **Next** controls will skip to the previous or next recorded image.
- In **MPEG** mode, **Prev**, **Next**, and **Replay Speed** disappear and **Video Size** appears. Setting the **Video Size** to Full allows the video playback to fill the entire video window. The video size dialog control only appears on the single-pane ViewWatch station. Selections are 1x, and full as shown in Figure 3-2.

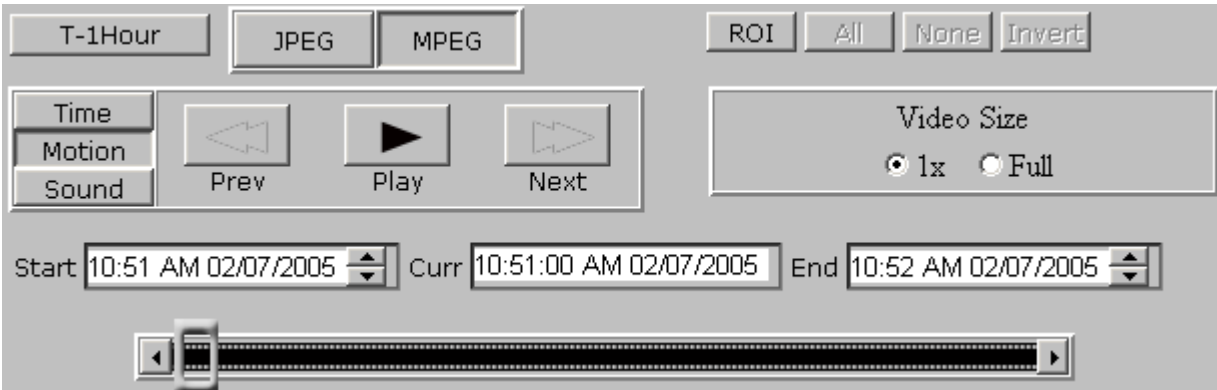



Figure 3-2. Browse Window Showing Video Size Dialog Box

The **Time/Image** switch controls the playback mode. In **Time** mode, the system displays recorded video in real time from the **Start** to the **End** time. In **Image** mode, the system only displays video in which activity occurs between the selected times. If there is no activity recorded for a certain amount of time, the playback will skip to the next time with activity.

The shuttle slider bar allows you to quickly skip to any section of the video.

Audio Control

If there is archived audio for the camera, an audio control icon  will appear at the bottom of the video window. Clicking the audio control icon toggles the audio between audible and muted.


Region of Interest Filter

A feature of the Browse function is the **Region of Interest filter**. This allows selection of an area of interest for video replay narrowing the search for event recreation. This function is only available when in **Image** mode. When this filter is enabled, only video containing activity within the selected Region of Interest will be played back. To activate the ROI filter, follow the steps below:

1. Click on the **Image** button.
2. Click on the **ROI** Button.
3. Click on the video spots, where you want ROI. You can have more than one.




Figure 3-3. ROI Selected

4. Click **Play**  and the system will play back only the portions of the recorded video containing movement in this area.

Example: You know an item was stolen from your inventory between 11:30 and 11:45 PM on 3/25/2002. It was stolen from an area monitored by camera #14.

Drag camera #14 into the video window.

1. Set the **Start** time to 11:30 PM 03/25/2002 and the **End** time as 11:45 PM 03/25/2002 by using the arrows  to the right of these windows.
2. Click on **ROI**, and click on the item in question.
3. Click **Play**. The system plays back video that contains any activity that occurred in the selected area between 11:30 and 11:45.

Alarms and Alerts

Overview

Alarms

An **Alarm** is generated in response to a **motion** or an **event** detected by the system. This means that when an Alarm has been defined and is turned on, a motion or an event defined by the alarm profile will generate an Alarm that can be used to alert response personnel. An Alert is sent in response to an Alarm. Each defined alarm has an associated status, which may be set to "On" or "Off." If an alarm is detected, but that alarm's status is "Off," no alerts will be sent.

Motion

Motion alarms are defined by selecting a Camera and a Profile. Motion detected on the selected camera during time periods defined by the Profile will generate an Alarm and send an Alert.

Audio

Audio alarms are defined by selecting a Camera and a Profile. Audio detected on the selected camera during time periods defined by the Profile will generate an Alarm and send an Alert.

Panic Button

Panic Button alarms are triggered by pressing a button on a Panic Button fob. Pressing a Panic Button will always generate an Alarm and send an Alert.

Event

Event alarms are triggered by a security device setup in your system through the optional GateWatch™ Third-Party Integration Software. These devices may include third-party access keypads, smoke alarms, and perimeter security implements. Events detected on the selected device

during time periods defined by the Profile will generate an Alarm and send an Alert.

Temperature

Temperature alarms are triggered by e-Watch cameras or encoders. They are triggered when the device exceeds its optimum operating temperature.

Alerts

Alerts are sent in response to alarms. The system can send ViewWatch popup alerts, pager calls, and e-mail messages. Once defined, alerts may be set to "On" or "Off." If an alarm is detected, but the alert's status is Off, that alert will not be sent.

ViewWatch Popup Alerts

When an alarm is detected, and the system is Armed, a popup window will display on the ViewWatch screen with a description of the event and sound an audible alarm. Additionally, a colored border will blink around the video pane of the camera that detected the motion event. The respective camera icon on the map window will also blink. The blinking border color can be selected and setup at the server. ViewWatch can display up to ten popup windows. If ten popup windows are displayed and another alert is received, the oldest popup window will close and the new alert will display. When the system is Disarmed, the camera icon and camera video border will blink, but the popup alert will not appear. The popup alert only appears when the system is Armed. If a camera has both a Motion alarm and a Panic Button alarm, the Panic Button alarm takes precedence.

Acknowledging And Clearing Alarms

The popup window contains an Acknowledge button, a Clear button and a Close button, as shown in figure 4-3. Clicking the Acknowledge button stops the audible alarm. Clicking the Clear button clears the alarm and resets the device to un-alarmed status. Clicking the Close button closes the popup window. If the popup window is closed but the device is still alarmed, the popup windows can be restored. Right-click on the map icon or video pane, then select the alarm from the context menu as shown in figures 4-1 and 4-2.

Panic Button Alarms

The e-Watch® Situational Awareness System can be configured to interface with optional "panic button" devices. Panic button devices usually consist of a transmitter that sends a signal to a receiver connected to an e-Watch camera. Signals can be sent over hard-wired systems or via

infrared wireless. When the camera receives the signal, an alarm is displayed at the ViewWatch station as described above. Some transmitter devices are in the form of a “fob.” For example, many automobile keys now contain a wireless fob that allows the owner to lock and unlock the car doors and turn on/off the alarm. Most fobs are programmable, allowing different buttons to be set for different activities. When an alarm is triggered by panic button, the camera’s video pane displays a blinking colored border. The border color corresponds to the number of the Panic button that was pushed. If the camera has both Motion and Panic Button alarms, the Panic Button alarm takes precedence. In addition to the effects described above, clicking the Acknowledge button in a Panic Button Alert popup window will cause the blue LED on the e-Watch camera to flash continuously, thereby informing on-site personnel that the alarm was acknowledged. Clicking the Clear button causes the camera LEDs to return to normal operation.

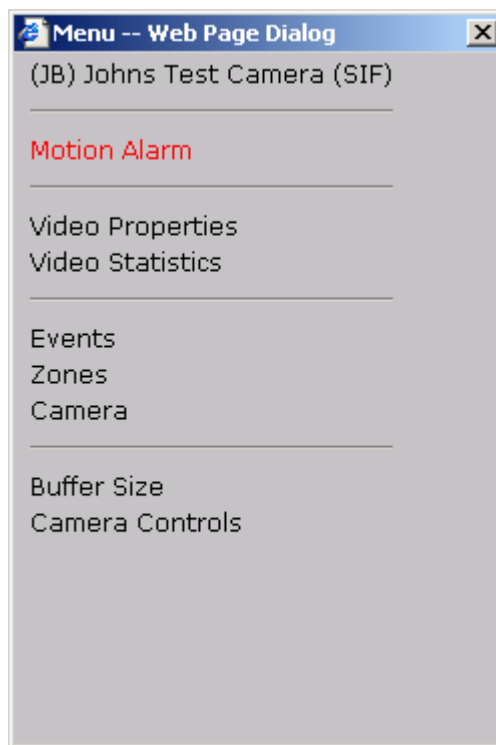


Figure 4-1. Motion Alarm

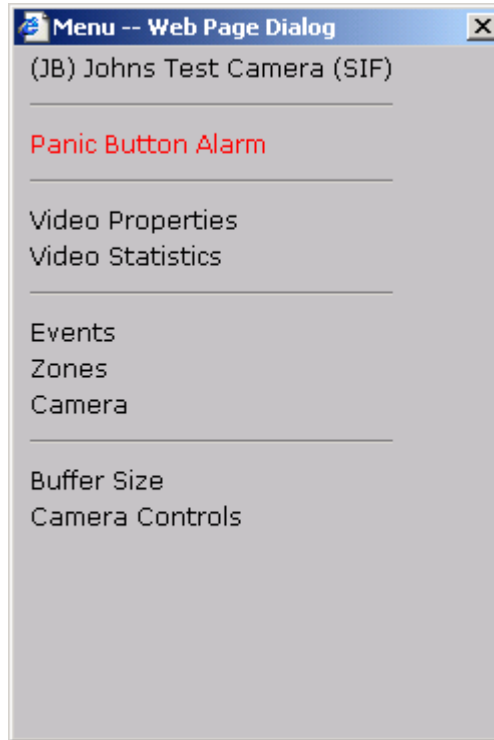


Figure 4-2. Panic Alarm



Figure 4-3. Motion Alarm Dialog Window

Pager Calls

A pager call is defined by entering a dial string and the name of the pager's owner. When an alarm is detected, the system will dial the number string, thus notifying the pager owner of the alarm.

e-Mail Messages

E-mail messages are defined by entering the e-mail address and name of the recipient. When an alarm is detected, the system will send a message to the e-mail address that includes a description of the event.

Arming The System

A display in the upper right corner of the Control Window indicates when the system is armed or disarmed. See Figure 4-4.



Figure 4-4. Armed/Disarmed Indicator

If the Administrator has defined Alarms and Alerts, click the **Arm System** button. This will activate the defined alarms and alerts. Once a motion alert is sent, further alerts for motion will not be sent until the number of minutes setup in the registry have elapsed. Disarming and re-arming the system resets the alert suppress feature and causes new events on already alarmed cameras to trigger alerts. Clearing the alarm by clicking the Clear button in the popup alert window also resets the alert suppress feature. Alerts for other alarms (Devices and Panic buttons) will always be sent. To disarm the system, click the **Disarm System** button.

When the system is disarmed, defined alarms will cause icons in the Map Window and video pane borders to blink red, but no alerts will be sent. The Zoom to Alarm feature is also disabled.

Zoom To Alarm

When **Zoom To Alarm** is checked, e-Watch automatically displays the area where an alarm is triggered.

When a camera triggers a motion alarm, the video window will be re-configured to a single pane (1x1). The video stream from the alarmed camera will be displayed in the video pane.

If your system includes a GateWatch interface to other security devices and an alarmed event occurs at a security device other than a camera, the Video

Window is re-configured to four panes (2x2), displaying the video from the four cameras closest to the device triggered.


When **Zoom Audio** is also checked, the audio from the camera will also be played through the ViewWatch station's speakers.

When **Alarm Audio** is checked, e-Watch automatically plays the audio from a camera when an alarm is triggered, but ViewWatch does not zoom to the camera. Alarm Audio and Zoom To Alarm cannot both be checked.

Configuring ViewWatch™

Presets

Presets are used to save a ViewWatch setting or to load a previously saved setting. A Preset remembers all ViewWatch settings, including loaded sites, maps, and the number of panes displayed on the monitors.

To save or delete presets, click the  button in the Control Panel. This will open the Presets And Schedules window as shown in Figure 5-1.

To load a previously created preset, select the desired preset and click the **Load** button. If you wish to delete a preset, select that preset and click the **Delete** button.

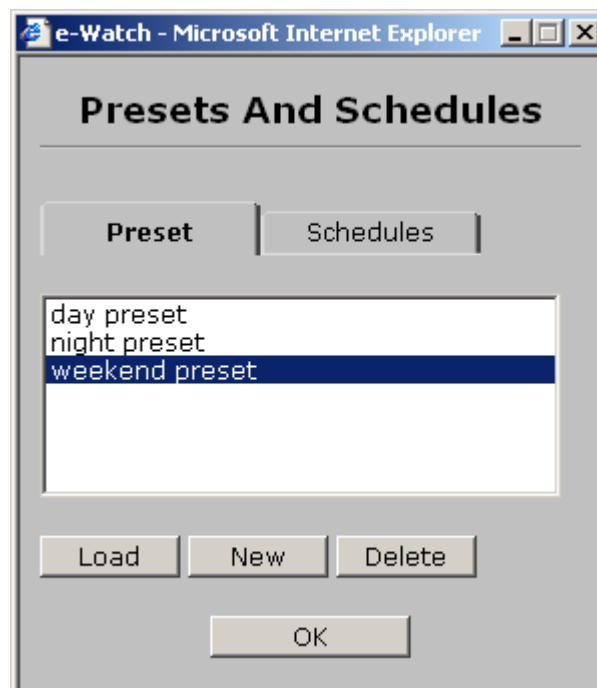


Figure 5-1. Presets And Schedules Window

To save the current ViewWatch settings as a new preset, click the **New** button. Enter a name for the new preset. then click the **OK** button. If you do not wish to save, click the **Cancel** button.

Scheduling Presets

To schedule presets, click the Schedules tab in the Presets And Schedules window as shown in Figure 5-2.

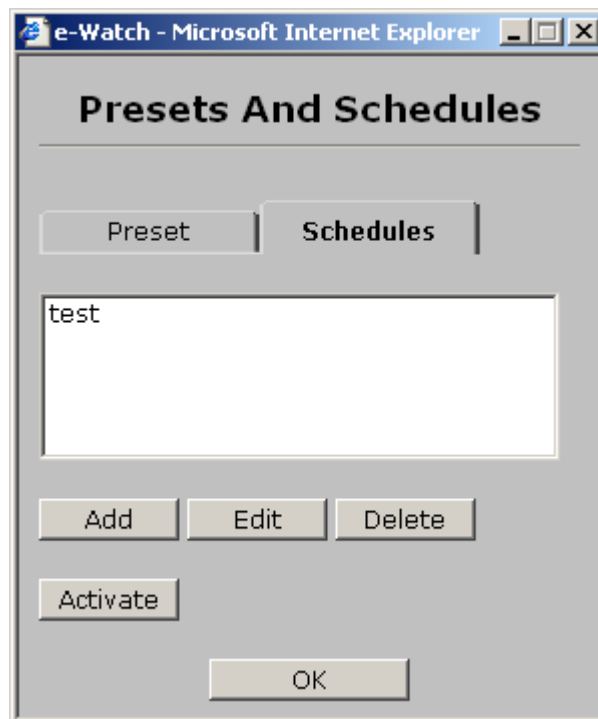


Figure 5-2. Schedules Tab

Presets can be scheduled to be automatically loaded on selected days at selected times. Your lunch preset can be scheduled to be automatically loaded each weekday five minutes prior to the beginning of the lunch period. Follow these steps to create a Scheduled Event that loads a preset.

1. Click the **Presets** button in the lower right corner of the ViewWatch Control Window.
2. Click the **Schedules** tab.
3. Click the **Add** button to create a new schedule.
4. Enter a name for the schedule, then click the **Continue** button to display the scheduling calendar.
5. On the selected day, click the “plus” icon to display the **Scheduled Event** screen.

6. Enter a name for the event.
7. Click the “calendar” icon to select a different **Date**, if necessary.
8. Click the “clock” icons to select the **Start** and **Stop** times.
9. Click the “arrows” icon to select a **Recurrence**, if desired.
10. Select a priority from the **Priority** pulldown list.
11. Click the Add button to display the **Event Action** screen.
12. Select “Presets” in the **Available** pulldown list.
13. Click the preset in the **Available** window to highlight it.
14. Click the “left” (“<”) icon to move the preset from the **Available** window to the **Scheduled Action** window.
15. Click the **Continue** button.
16. In the Scheduled Event window, click the **Continue** button.
17. Verify that the new schedule appears on the calendar on the correct days.
18. Click the “close” (“x”) icon in the upper right corner of the **Scheduled Action** window to close the window.

Scheduling Multiple Presets

You can follow the procedure described above to create Scheduled Events that load a preset on multiple days, or that load multiple presets at different times on the same day.

If you schedule multiple presets to be loaded on the same day, the order in which the presets are loaded is determined by the Scheduled Events’ start times. The preset with the earliest Scheduled Event start time will be loaded, and will remain loaded until the Scheduled Event expires or the ViewWatch interface is changed manually. When that Scheduled Event expires, the preset with the next earliest Scheduled Event start time is loaded, etc.

You can modify the order in which presets are loaded by setting the Scheduled Event’s priority.

1. Click the **Presets** button in the lower right corner of the ViewWatch Control Window.
2. Click the **Schedules** tab.
3. Click the schedule name to select it.
4. Click the **Edit** button.
5. In the calendar view, click the Scheduled Event name to display the **Scheduled Event** screen.
6. Select a new priority from the Priority pulldown list.
7. Click the **Continue** button.

A preset is always loaded at the Scheduled Event’s start time, unless a preset with the same or higher priority Scheduled Event is already loaded.

List Cameras

In addition to dragging cameras from the site map, camera video can be viewed by selecting a camera from a list of all available cameras.

1. Click the **List Cameras** button to display a list of available cameras.
2. Select a local or remote server (if connected).
3. Click on a camera from the list and drag it to a pane in the Video Window. See Figure 5-3.

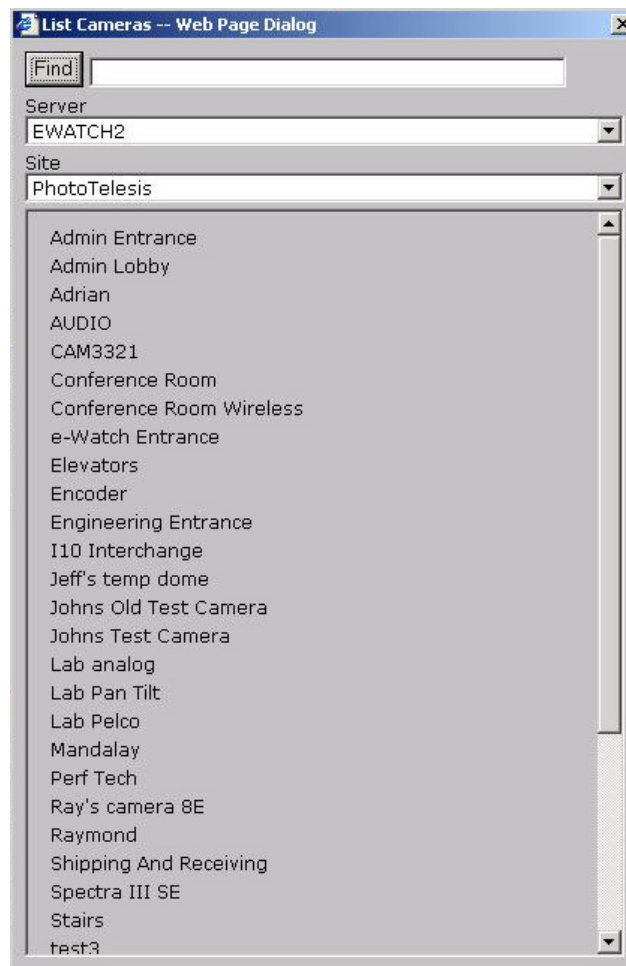


Figure 5-3. List Cameras

Note: if remote servers are not connected then the server list will not be visible.

List Zones

A Zone is a predefined collection of cameras. When a zone is assigned to a video pane, the video streams from the cameras in the zone are displayed one at a time at a predetermined frequency. Any user with Administrator authority may define and create a zone. There are three ways to access the Define Zones window:

1. Click the Zone button in the Control Window.
2. Right-click on a camera icon on the Map Window, and select Zones from the menu.
3. Right-click on a live video pane and select Zones from the menu.

Once a zone has been created, it can be accessed via the List Zones button in the Control Window. This window displays a list of available zones. The user may then "drag and drop" any zone from the list into any pane in the video window.

Viewing a Zone

To view a zone, follow the steps below:

1. Click the **List Zones** button on the Control Panel to display the List Zones window as shown in Figure 5-4.

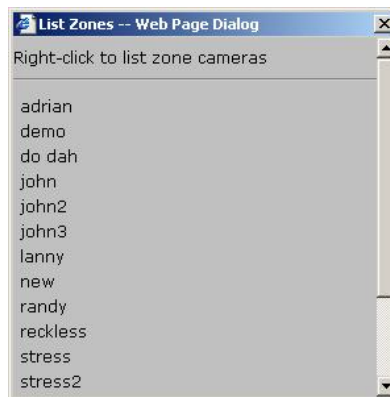


Figure 5-4. List Zones Window

2. To view cameras comprising a zone, right-click on the zone name. A window will display showing the cameras that are in that zone.
3. To view a zone, select and "drag" it to any video pane. The cameras in that zone will start streaming their video and changing from camera to camera according to the cycle rate set for the zone.

List of Figures

- Figure 1-1. Typical Monitor Station 2
- Figure 1-2. SiteWatch Logon Screen 3
- Figure 1-3. Internet Explorer Address Field 4
- Figure 1-4. Internet Explorer Security Warning 6
- Figure 1-5. The Primary ViewWatch™ Screen 8
- Figure 1-6. Facility Map with Camera Icons 9
- Figure 1-7. Text Box Showing Friendly Camera Name 9
- Figure 1-8. Video Pane in 1x1 View 11
- Figure 1-9. Monitor and Panes Buttons 11
- Figure 1-10. Video Window Configured with Four Panes 12
- Figure 1-11. Audio Controls Dialog 14
- Figure 1-12. Control Window in Live Mode with Administrator Permission 15
- Figure 1-13. Control Window in Live Mode with User Permission 15
- Figure 1-14. Control Window in Browse Mode 15
- Figure 1-15. ViewWatch Options Dialog 16
- Figure 1-17. Full Screen Mode 18
- Figure 2-1. Monitor and Panes Controls 20
- Figure 2-2. 16 Video Panes Display 21
- Figure 2-3. Sites and Maps Controls 21
- Figure 2-4. Several Sites Loaded on an e-Watch System 22
- Figure 2-5. Selecting a Map from the Pull-Down Menu 22
- Figure 2-6. Cam Controls Window 23
- Figure 2-7. Pan/Tilt Control Without Variable Speed 24
- Figure 2-8. Pan/Tilt Control With Variable Speed 25
- Figure 2-9. Cam Controls With Pan/Tilt 25
- Figure 2-10. Preset Window 26
- Figure 2-11. Pattern Window 27
- Figure 2-12. Setup Window 28
- Figure 2-13. Joystick Crosshairs 30
- Figure 2-14. Field Of View Pan/Tilt Control 31
- Figure 2-15. Pan, Tilt And Zoom To Area Of Interest 32
- Figure 3-1. Video Playback Controls 33

Figure 3-2. Browse Window Showing Video Size Dialog Box 37

Figure 3-3. ROI Selected 38

Figure 4-1. Motion Alarm 41

Figure 4-2. Panic Alarm 42

Figure 4-3. Motion Alarm Dialog Window 42

Figure 4-4. Armed/Disarmed Indicator 43

Figure 5-1. Presets And Schedules Window 45

Figure 5-2. Schedules Tab 46

Figure 5-3. List Cameras 48

Figure 5-4. List Zones Window 49

List of Tables

Table 0-1. Organization v
Table 0-2. Conventions v
Table 2-1. Explanation of Camera Controls 23
Table 2-3. Encoder Controls 25
Table 3-1. Description of Video Playback Controls 34

Acronyms and Abbreviations

APER	Aperture
AUX	Auxiliary
CAM	Camera
CGMP	Cisco Group Management Protocol
CONTR	Contrast
DSL	Digital Subscriber Line
ID	Identification
IGMP	Internet Group Management Protocol
IP	Internet Protocol
JPEG	Joint Photographic Expert Group
LAN	Local Area Network
MPEG	Motion Picture Expert Group
PC	Personal Computer
P/T/Z	Pan/Tilt/Zoom
QSIF	Quarter Standard Interchange Format
ROI	Region of Interest
SAT	Saturation
SHUT	Shutter
SIF	Standard Interchange Format
VGA	Video Graphics Array/Adapter
VLAN	Virtual Local Area Network
VPN	Virtual Private Network
WAN	Wide Area Network

Glossary

Activity Gated Storage™ Module

A method of reducing overall archive storage requirements by only storing video when the camera or encoder detects activity with its field of view.

Alarm

An event that the system will detect, e.g., motion. Alarms can be defined for different cameras at different times, enabling alerts to be sent when a motion alarm is detected. Each defined alarm can be set to On or Off. If an alarm is detected but that alarm's status is Off, no alert will be sent.

Alert

An alert is a response to an alarm. Alerts may be in the form of a ViewWatch popup, pager call, or e-mail that contains a description of the event.

Authorization Level

Authorization levels at which the system grants privileges and access to users by the use of a User ID and Password. The four levels are: Administrator, Investigator, User, and Restricted.

Browse Mode

When in Browse Mode, the system displays a variety of controls for reviewing archived still images or MPEG video clips. Archived video for a specific date and time can be recalled and played back on the video window.

Camera Controls

A series of controls that enable the user to control and adjust camera parameters such as zoom, pan, tilt, focus, hue, saturation, brightness, contrast, etc.

Control Window

One of three areas of the ViewWatch screen, the other two being the Video Window and the Map Window. The Control Window, located across the bottom of the screen, contains all buttons for configuring and using the system.

e-Mail Message

An alert generated in response to an alarm. E-mail messages are defined by entering the name of the recipient and the recipient's e-mail address. When an alarm is detected, the system will send an e-mail message that includes a description of the event alarm.

Event Report

A report generated to reflect activity from cameras or other security devices. A camera report displays the camera name and average number of motion events, represented by a line of colored dots. Time periods with no events are represented by a black dot, while blue and red dots represent time periods of few and many events, respectively. By clicking on a dot, the user can recall and playback the motion events during the specified time period.

Events

Event settings determine what kind of events the system will detect and what actions it will take in response to a detected event. Detected events are called alarms. System responses are called alerts. When motion, or another event is detected, the system will execute an alarm and send an alert to interested personnel. The system must be armed for alerts to be sent.

Exported Images

High resolution JPEG images and full motion video files that have been copied from the SiteWatch database and prepared for transfer to removable media. Exported images can be viewed using the Export Viewer.

Export Viewer

An e-Watch program that is included with exported images and provides viewing and event reconstruction features.

GateWatch™ Third-Party Integration Software

GateWatch is an additional software package that allows the e-Watch system to interface with third-party access control and alarm systems, such as access keypads, smoke alarms, or perimeter security implements. It allows third-party devices to be added to maps and monitored in ways similar to e-Watch cameras.

List Cameras

A screen accessed by a button on the Control Window that displays a list of cameras for a specific site.

List Zones

A screen accessed by a button on the Control Window that displays a list of zones for a specific site.

Map Window

One of three areas of the ViewWatch screen, the other two being the Video Window and the Control Window. The Map window, located in the upper left of the screen, is used to set up and display facility maps. The maps contain icons representing cameras or other security devices. The user is able to "drag and drop" cameras from the map to video panes to monitor the cameras' video.

Pager Call

An alert generated in response to an alarm. Pager calls are defined by entering the name of the pager's owner and a dial string. When an alarm is detected, the system will dial the pager number.

Popup Alert

An alert that pops up on the ViewWatch screen in response to a defined Alarm, containing a description of the event and sounding of an audible alarm. The audible alarm may be manually disabled.

Presets

A preset is a collection of all of the system's application settings, which include: sites, maps, video screen formats, video streams displayed, and primary or secondary screen selected. The Presets window enables the user to save the current application settings as a named preset. When a preset is loaded, existing application settings are discarded and replaced by the settings in the preset.

Primary Screen

A PC running Windows 98/2000 and Windows Internet Explorer, connected to a network, and configured with SiteWatch system software, used in an e-Watch Situational Awareness System. The Primary Screen controls all aspects of the e-Watch system.

Profile

A profile is a setting of days and times during which alerts are to be sent in response to alarms. This feature allows alerts to be sent or suppressed according to a predefined schedule. The system can be armed or disarmed through the Profiles Screen. If the system is disarmed, alarms will be detected but no alerts will be sent.

Region of Interest

A rectangular area drawn on the Video Window which defines a Region of Interest (ROI). When ROI is enabled, only video containing motion in the ROI will be played back.

Secondary Screens

Additional screens to supplement the Primary Screen, used only for viewing video from selected cameras. Secondary screens do not have a mouse or user interface, and are controlled from the Primary Screen.

SiteWatch™ Situational Awareness Software

The software used to manage and use your e-Watch system. This package includes the SiteWatch server, ViewWatch module, MotionWatch module, EventWatch module and DecisionWatch module.

Video Window

One of three areas of the ViewWatch screen, the other two being the Map Window and the Control Window. The Video Window, located in the upper right of the screen, is used to display streaming video from the system's cameras. The Video Window can be configured to display one, four, nine, or sixteen video panes.

ViewWatch™ module

The software used to view video.

Zones

A predefined collection of cameras. The video streams from the cameras are displayed one at a time on a rotating basis at a predetermined rate.

- A**
- Activity Gated Storage 54
- Advanced Camera Controls
 - Click To Pan/Tilt 31
 - Field Of View Pan/Tilt 31
 - Follow The Mouse 32
 - Mousewheel Zoom 31
 - Pan/Tilt/Zoom To Box 32
- Alarms 39, 54
 - Acknowledging And Clearing 40
 - Event 39
 - Motion 39
 - Panic Button 39
 - Temperature 40
- Alerts 39, 54
 - Defining 40
 - Popup 40
- Arming The System 43
- Audio 13, 37
- Authority Levels 2, 54
 - User 2
- B**
- Browse 33, 54
 - Example 36
 - Playback Controls 33
 - Playback Controls - Description 34
 - Region of Interest Filter 37
 - Tips 36
- C**
- Cache 5
- Camera Controls 23, 54
 - Explanation 23
- Camera Icon 49
- Control Window 14, 43, 49, 54
- Crosshairs 30
- D**
- Define Zones 49
- Disarm System 43
- Drag And Drop 49
- E**
- e-Mail Message 43, 55
- Event 39, 55
- Event Report 55
- F**
- Full Screen Mode 18
- G**
- GateWatch 55
- I**
- Internet Explorer Security 6
- Internet Explorer Security Warning 6
- J**
- Joystick 28
- Joystick Crosshairs 30
- L**
- List Cameras 48, 55
- List Zones 55
- Logging On
 - Initially 2
 - Remotely 4
- M**
- Map 8, 22
- Map Icons For Third-Party Devices 9
- Map Window 8, 20, 56
 - Actions 10
- Monitor Station 1
- Motion 39
- P**
- Pager Call 43, 56
- Pan/Tilt 24
 - Version One 24
 - Version Two 24
- Panic Button Alarms 40
- Pelco 25
 - Spectra 25
- Pelco Spectra II/III Controls (Advanced) 30
- Popup Alert 56
- Presets 45, 56
 - Scheduling 46
- Primary Screen 8, 56
- Profile 56
- R**
- Region Of Interest 56

Remote Server 7

ROI 56

Roles 2

 Administrator 3

 Investigator 3

 User 2

S

Secondary Screen 56

Setting Buffer Size 17

Single Pane Logon 5

Sites 22

SiteWatch 57

V

VGA monitors 1

Video

 Live mode 20

 Other Maps and Sites 21

 Viewing 19

Video Pane 49

Video Window 10, 43, 57

 Actions 12

 Icons 13

ViewWatch 57

 Options 15

W

Wireless 1

Z

Zones 49, 57

 Viewing 49

Zoom To Alarm 43

Zoom to Alarm 43