



e-Watch®

# **SiteWatch™ Situational Awareness Software Guide For Generic IP Cameras**

SiteWatch Version 5.1

## **e-Watch Corporation**

7800 IH-10 West, Suite 720  
San Antonio, TX 78230  
USA

[www.e-watch.com](http://www.e-watch.com)

tel: 210 349-2000  
fax: 210 341-1020

#### READ THIS NOTICE

THE SPECIFICATIONS AND INFORMATION REGARDING THE PRODUCTS IN THIS MANUAL ARE SUBJECT TO CHANGE WITHOUT NOTICE. ALL STATEMENTS, INFORMATION, AND RECOMMENDATIONS IN THIS MANUAL ARE BELIEVED TO BE ACCURATE BUT ARE PRESENTED WITHOUT WARRANTY OF ANY KIND, EXPRESS OR IMPLIED. USERS MUST TAKE FULL RESPONSIBILITY FOR THEIR APPLICATION OF ANY PRODUCTS.

THE SOFTWARE LICENSE AND LIMITED WARRANTY FOR THE ACCOMPANYING PRODUCT ARE SET FORTH IN THE INFORMATION PACKET THAT SHIPPED WITH THE PRODUCT AND ARE INCORPORATED HEREIN BY THIS REFERENCE. IF YOU ARE UNABLE TO LOCATE THE SOFTWARE LICENSE OR LIMITED WARRANTY, CONTACT YOUR E-WATCH REPRESENTATIVE FOR A COPY. NOTWITHSTANDING ANY OTHER WARRANTY HEREIN, ALL DOCUMENT FILES AND SOFTWARE OF THESE SUPPLIERS ARE PROVIDED 'AS IS' WITH ALL FAULTS. E-WATCH AND ITS SUPPLIERS DISCLAIM ALL WARRANTIES, EXPRESSED OR IMPLIED, INCLUDING, WITHOUT LIMITATION, THOSE OF MERCHANTABILITY, FITNESS FOR A PARTICULAR PURPOSE AND NONINFRINGEMENT OR ARISING FROM A COURSE OF DEALING, USAGE, OR TRADE PRACTICE.

IN NO EVENT SHALL E-WATCH OR ITS SUPPLIERS BE LIABLE FOR ANY INDIRECT, SPECIAL, CONSEQUENTIAL, OR INCIDENTAL DAMAGES, INCLUDING, WITHOUT LIMITATION, LOST PROFITS OR LOSS OR DAMAGE TO DATA ARISING OUT OF THE USE OR INABILITY TO USE THIS MANUAL, EVEN IF E-WATCH OR ITS SUPPLIERS HAVE BEEN ADVISED OF THE POSSIBILITY OF SUCH DAMAGES.

#### UNITED STATES FEDERAL COMMUNICATIONS COMMISSION NOTICE

The following information is for FCC compliance of Class A devices: This equipment has been tested and found to comply with the limits for Class A digital device, pursuant to part 15 of the FCC rules. These limits are designed to provide reasonable protection against harmful interference when the equipment is operated in a commercial environment. This equipment generates, uses, and can radiate radio-frequency energy and, if not installed and used in accordance with the instruction manual, may cause harmful interference to radio communications. Operation of this equipment in a residential area is likely to cause harmful interference, in which case users will be required to correct the interference at their own expense.

You can determine whether your equipment is causing interference by turning it off. If the interference stops, it was probably caused by the e-Watch® equipment or one of its peripheral devices. If the equipment causes interference to radio or television reception, try to correct the interference by using one or more of the following measures:

- Turn the television or radio antenna until the interference stops.
- Move the equipment to one side or the other of the television or radio.
- Move the equipment farther away from the television or radio.
- Plug the equipment into an outlet that is on a different circuit from the television or radio. (That is, make certain the equipment and the television or radio are on circuits controlled by different circuit breakers or fuses.)

Modifications to this product not authorized by E-Watch could void the FCC approval and negate your authority to operate the product.

#### COPYRIGHT AND TRADEMARK NOTICE

Copyright© 2003-2010 e-Watch Corporation. All rights reserved. e-Watch is a registered trademark of e-Watch Corporation. ViewWatch, DecisionWatch, EventWatch, SiteWatch, MotionWatch, GateWatch, AirWatch, PocketWatch, PeopleWatch, BankWatch, ClassWatch, ObjectWatch, WatchLink, Activity Gated Storage, and Gigapixel are trademarks of e-Watch Corporation. Any other trademarks mentioned in this document are the property of their respective owners.

The use of the word partner does not imply a partnership relationship between e-Watch and any other company.

e-Watch systems do not prevent crimes from being committed, but are intended to be used to monitor and investigate.

e-Watch components are electronic devices and complex commercial software products. As such, they may fail on occasion. Multiple devices with overlapping zones should be used for redundancy.

e-Watch event notification capabilities must be user programmed and activated prior to use. System reliability is dependent on the underlying network infrastructure and associated communications services that may fail on occasion. The user of the e-Watch system is advised to evaluate risk associated with network failures and operator errors. Routine auditing and preventive maintenance of the system is essential to assure optimum performance.

Event analysis and recreation is subject to system configuration, lighting conditions, environmental conditions, lens and housing cleanliness, distance to subject, operator-invoked control settings, and many other factors.

Read and follow all documentation to assure proper performance.

# CONTENTS

## Preface

- Purpose iii
- Audience iii
- Organization iv
- Related Documentation iv
- Conventions iv
- Obtaining Documentation v
- Documentation Feedback vi
- Obtaining Assistance vi

---

## PART 1

---

### Chapter 1

---

### Chapter 2

---

### Chapter 3

---

### Chapter 4

---

## Administration Guide

### INTRODUCTION 1

- Overview 1
- Procedures 2
- e-Watch Components Required 2
- Customer Supplied Components 2

### PREPARING SITEWATCH 3

- Setting The Third Party Admin User Name And Password In SiteWatch 3

### PREPARING GENERIC IP CAMERAS 5

- Setting The User Name 5
- Setting The Password 5

### DEFINING GENERIC IP CAMERAS 6

- Log On To ViewWatch 6
- Open The Camera Definition Screen 6
- Define The Generic IP Camera 7
- Changing The IP Address 8

---

<b>PART 2</b>	<b>Appendices</b>
<b>APPENDIX A</b>	<b>List Of Figures 9</b>
<b>INDEX</b>	<b>Index 10</b>

The preface describes the purpose, audience, organization, and conventions of this guide and provides information on how to obtain related documents.

The preface covers these topics:

- Purpose
- Audience
- Organization
- Related Documentation
- Conventions
- Obtaining Documentation
- Documentation Feedback
- Obtaining Assistance

## Purpose

This guide provides instructions for using Generic IP Camera Inc. (Generic IP Camera) cameras with the SiteWatch™ Situational Awareness Software. It includes descriptions of procedural tasks to complete when installing and configuring Generic IP Camera cameras as well as diagrams and illustrations. It identifies Graphical User Interface (GUI) buttons, menus, dialog windows, and their configuration.

## Audience

The SiteWatch Situational Awareness Software Guide For Generic IP Camera Cameras provides operating instructions for personnel responsible for setting up and maintaining the e-Watch Surveillance System. Some knowledge of Microsoft Windows® and Windows® Web Browsing is preferred. Some knowledge of network protocols and TCP/IP principles is preferred.

It is assumed that the reader of this guide is familiar with the SiteWatch Situational Awareness Software. For information and procedures on how to install and configure the SiteWatch Situational Awareness Software, refer to e-Watch Corporation document URG-9110-002 SiteWatch Situational Awareness Software Administration Guide, available from e-Watch Corporation. For information and procedures on how to operate the ViewWatch™ interface, refer to e-Watch Corporation document URG-9106-002 SiteWatch Situational Awareness Software User Guide, available from e-Watch Corporation.

Technical training from a qualified e-Watch training program is recommended. This guide is designed to supplement such training and is not meant to replace classroom training from a qualified instructor.

## Organization

This document is organized as shown in the following table

*Table 0-1 Document Organization*

<b>Part</b>	<b>Description</b>
Part 1	‘Guide For Generic IP Camera Cameras’  Contains information on installation and configuration of Generic IP Camera cameras for use with SiteWatch.
Part 2	‘Appendices’  Contains lists, glossary and meaning of abbreviations.

## Related Documentation

Refer to the following documents for further information about related e-Watch applications and products:

- URG-9106-002—SiteWatch™ Situational Awareness System User Guide
- URG-9110-002—SiteWatch™ Situational Awareness System Administration Guide
- URG-9111-001—e-Watch® Situational Awareness System Quick Start Guide
- URG-9112-001—e-Watch Product Overview

## Conventions

This document uses the following conventions:

Table 0-2. Conventions

Convention	Description
<b>Boldface</b> font	Commands and keywords are in <b>boldface</b> .
<i>Italic</i> font	Arguments for which you supply values are in <i>italics</i> .
[ ]	Elements in square brackets are optional.
{x y z}	Alternate keywords are grouped in brackets and separated by vertical bars.
[x y z]	Optional keywords are grouped in brackets and separated by vertical bars.
String	A non-quoted set of characters. Do not use quotation marks around the string or the string will include the quotation marks.
Screen font	Terminal sessions and information the system displays are in <i>screen font</i> .
<b>Boldface screen font</b>	Information you must enter is in <b>boldface screen font</b> .
<i>Italic screen font</i>	Arguments for which you supply values are in <i>italic screen font</i> .
^	The symbol ^ represents the key labeled Control - for example, the key combination of ^D in a screen display means hold down the Control key while you press the D key.
-->	This pointer highlights an important line of text in an example.
◇	Non-printing characters, such as passwords, are in angle brackets.

## Obtaining Documentation

The following sections provide sources for obtaining documentation from e-Watch Corporation.

### World Wide Web

e-Watch documents can be found by going to the e-Watch web site

[www.e-watch.com](http://www.e-watch.com)

## By Mail

e-Watch Corporation.  
7800 IH 10 West, Suite 720  
San Antonio, Texas 78230  
210.349.2000

[support@e-watch.com](mailto:support@e-watch.com)

## Documentation Feedback

You can submit technical comments about e-Watch documentation in the following ways:

E-mail your comments to [support@e-watch.com](mailto:support@e-watch.com)

To submit comments by mail, write to the following address:

e-Watch Corporation  
7800 IH 10 West, Suite 720  
San Antonio, Texas 78230

We appreciate your comments.

## Obtaining Assistance

The following sections provide sources for obtaining assistance from e-Watch Corporation.

### Customer Support

For technical assistance please send requests to [support@e-watch.com](mailto:support@e-watch.com) or your local e-Watch reseller. You may also call 210-349-2000 and ask for Customer Support.

### Sales

For assistance with sales or marketing please call 210-349-2000 and ask for Sales or send requests to [sales@e-watch.com](mailto:sales@e-watch.com).

# Introduction

## Overview

e-Watch is a comprehensive surveillance and monitoring system adapted for transmitting Motion Picture Experts Group (MPEG) video streams, high resolution Joint Photographic Experts Group (JPEG) images, Motion JPEG (MJPEG), and detected event data over both wired and wireless networks (Local Area Network [LAN] and Wide Area Networks [WAN]). Additional functions, such as access control, environmental monitoring, and biographical database connectivity can be provided within one integrated system.

The e-Watch system is based on standard networking and Internet technology. Real-time data, as well as archived data, can be viewed from a monitor station or any authorized Personal Computer (PC) on the LAN, WAN, or the Internet. The archive application tracks and maintains all situational awareness information and provides high-speed access for fast location and display of data related to a specific event.

Automated notification of alarm conditions and other events can be provided to response personnel via dial-up circuits, cellular phones, pagers, e-mail, or via the Internet.

A typical e-Watch system consists of a SiteWatch server and a number of e-Watch digital IP cameras and video encoders.

Generic IP cameras can also be incorporated into an e-Watch system. Generic IP cameras produce a single motion JPEG video stream, and lack motion detection capability. Adding generic IP cameras provides an inexpensive way to expand the number of cameras attached to the system. Many of the control features available with e-Watch cameras are also available with generic IP cameras. These include:

- Viewing real-time video from anywhere on the Internet.
- Reviewing archived high-resolution images.

For a complete list of supported generic IP camera models please visit the Downloads page at [www.e-watch.com](http://www.e-watch.com).

**IMPORTANT:** Generic IP camera support is offered as a separate software module. Contact e-Watch sales for more information.

## Procedures

Setting up the e-Watch system to work with generic IP cameras consists of the following procedures:

1. Prepare the SiteWatch Situational Awareness Software to work with generic IP cameras
2. Prepare the generic IP cameras to work with the SiteWatch Situational Awareness Software
3. Define the generic IP cameras in the e-Watch system

## e-Watch Components Required

The following is a list of components required for installing the e-Watch system.

1. SiteWatch installation CD
2. Hardware security device—USB or parallel key
3. e-Watch serial number
4. e-Watch registration number

## Customer Supplied Components

The following is a list of components that are supplied by the customer for installing the e-Watch system and using Generic IP Camera cameras.

1. Server with operating system
2. Tape device (optional)
3. Any necessary third-party software
4. Monitor station with operating system
5. Generic IP Camera cameras

## Preparing SiteWatch

Before connecting generic IP cameras to an e-Watch system, you must set the user name and password that the SiteWatch Situational Awareness Software will use to communicate with generic IP cameras.

**IMPORTANT:** The user name and password you set in the SiteWatch Situational Awareness Software must also be set up in each generic IP camera. See Chapter 3.

**IMPORTANT:** This user should have administrator privileges for each generic IP camera.

### Setting The Third Party Admin User Name And Password In SiteWatch

Perform the following steps on the SiteWatch server console to set the third party admin user name and password (see Figures 2-1 and 2-2).

1. Open the e-Watch Server App.
2. Click the Registry tab.
3. Scroll down and click on the ThirdPartyAdminUsername key.
4. Enter the user name in the Value box.
5. Click the Set button.
6. Click on the ThirdPartyAdminPassword key.
7. Enter the password in the Value box.
8. Click the Set button.

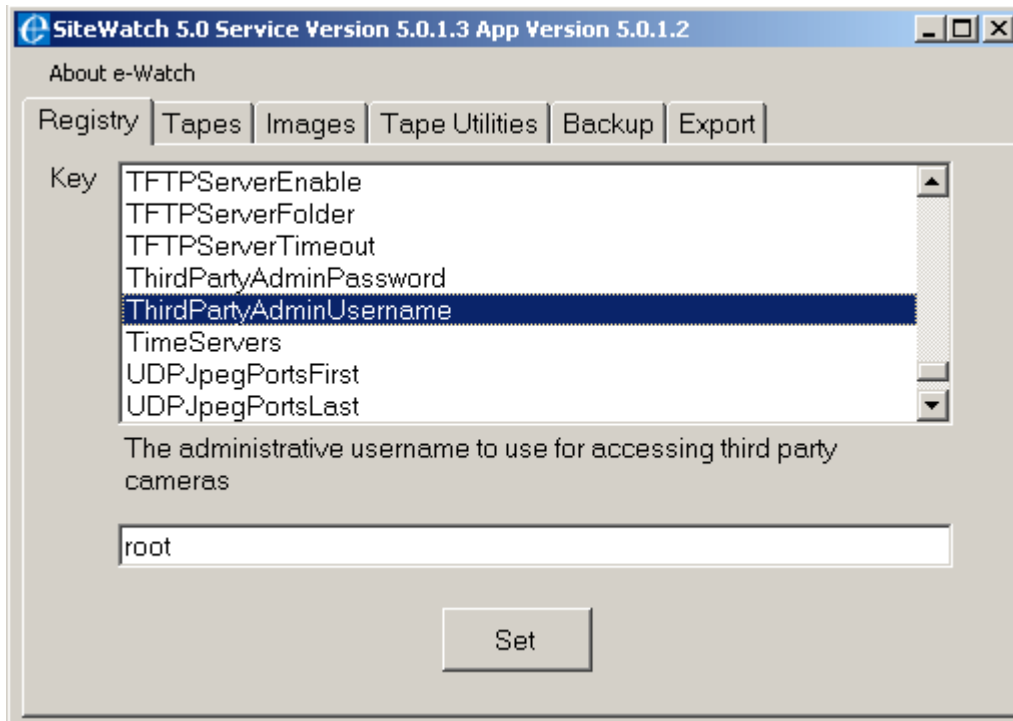


Figure 2-1. Third Party Username

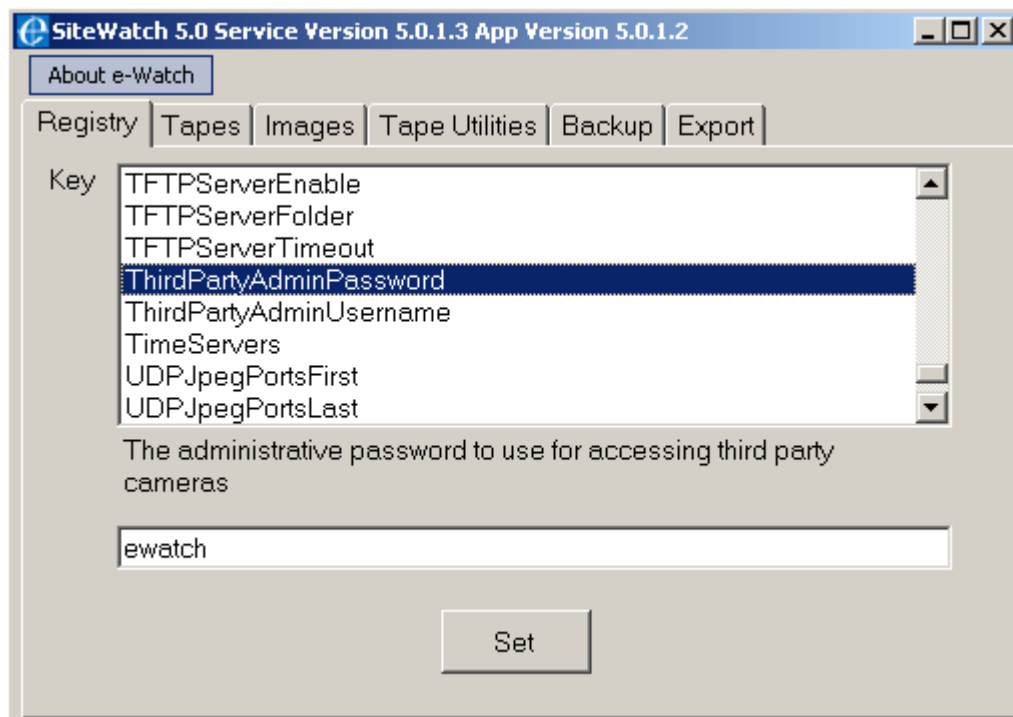


Figure 2-2. Third Party Password

## Preparing Generic IP Cameras

Before connecting an generic IP camera to an e-Watch system you must define the user name and password that the SiteWatch Situation Awareness Software will use to communicate with the camera.

The procedures for defining user names and passwords vary by camera manufacturer and model, but typically can be accomplished using the camera's built-in web interface. Consult the documentation for your particular generic IP camera model.

**IMPORTANT:** The user name must have **Administrator** privilege.

**IMPORTANT:** The user name and password must match the user name and password set in the SiteWatch Situational Awareness Software. See Chapter 2.

### Setting The User Name

Perform the following steps to set the user name.

1. Open Internet Explorer.
2. Navigate to the URL: **http://<camera ip address>**.
3. Follow the instructions in the documentation for your particular generic IP camera to define the user name.

### Setting The Password

Perform the following steps to modify the password.

1. Open Internet Explorer.
2. Navigate to the URL: **http://<camera ip address>**.
3. Follow the instructions in the documentation for your particular generic IP camera to define the password.

## Defining Generic IP Cameras

After you have prepared the SiteWatch Situational Awareness Software and the generic IP cameras, you must define the generic IP cameras in the e-Watch system. You must use the ViewWatch Camera Definition screen.

### Log On To ViewWatch

Log on to ViewWatch as described in either the SiteWatch Situational Awareness Software Administration Guide (URG-9110-002) or the SiteWatch Situational Awareness Software User Guide (URG-9106-002). You must have Define Cameras permission.

### Open The Camera Definition Screen

Follow these steps to open the Camera Definition Screen. See Figure 4-1.

1. In the ViewWatch Menu bar, click **Define**.
2. In the Define menu, click **Define Cameras**.
3. Click the **Add** button.

Camera Definition - Windows Inter...

### Camera Definition

DCS-910

SETUP | ARCHIVE | CONTROL

ID Number: 198

Camera Class: Generic IP Camera

MAC Address: 00 : 1E : 58 : B4 : 21 : 8D

IP Address: 192 . 199 . 75 . 116

Camera Model: D-Link DCS-910

Friendly Name: DCS-910

Archive JPEG:

Restart

Alert If Offline:

OK Cancel

Figure 4-1. Camera Definition Screen

## Define The Generic IP Camera

Follow these steps to define the generic IP camera. See Figure 4-1.

1. In the Camera Class list, select **Generic IP Camera**.
2. Enter the camera's MAC address in the space provided.
3. Enter the camera's IP address in the space provided.
4. Select the camera's model from the list provided. Contact e-Watch Customer Support if your camera's model is not in the list.
5. Enter the camera's friendly name in the space provided.
6. Click the **OK** button.

## Changing The IP Address

Generic IP cameras typically cannot notify the e-Watch software in the event that their IP address is changed. Follow these steps to manually update the camera's IP address. See Figure 4-1.

1. Log on to ViewWatch as described above.
1. In the ViewWatch Menu bar, click **Define**.
2. In the Define menu, click **Define Cameras**.
3. Click the camera in the cameras list.
4. Click the Edit button.
5. Enter the camera's IP address in the space provided.
6. Click the **OK** button.

## List Of Figures

- Figure 2-1. Third Party Username 4
- Figure 2-2. Third Party Password 4
- Figure 4-1. Camera Definition Screen 7

---

## I N D E X

M  
MPEG 1  
P  
Password 3, 5  
R  
Registry 3  
ThirdPartyAdminPassword 3  
ThirdPartyAdminUsername 3  
U  
User Name 3, 5